

EMPOWERING  
**Resources**  
**For All**



Center for Thriving  
Communities

# Community Engagement Report 2023

Prepared by: UF Center for Health Equity & Engagement Research  
<https://med.jax.ufl.edu/center-health-equity-engagement-research/>



FLORIDA HEALTH  
JUSTICE PROJECT





Center for Thriving  
Communities

Community  
Engagement  
Report

# Table of Contents

	<b>Page</b>
Overview .....	4
Selection of Communities .....	6
Public Opinion Survey .....	8
Methodology .....	8
Results .....	8
Community Listening Sessions .....	14
Methodology .....	15
Results .....	15
Other Topics Discussed from the UNF survey .....	20
Existing Resources .....	23
Solutions from the Community .....	24
Limitations .....	25
Appendix .....	27

## Overview

In 2022, the Florida Blue Foundation awarded UF Health Jacksonville and their community partners (904WARD, Hispanic Federation, and Florida Health Justice Project) with a four-year grant to establish a statewide center to impact the health and the social drivers necessary for communities to achieve the highest levels of health and well-being. Through a shared visioning process, the Center for Thriving Communities (CTC) was formed as the entity to implement this project. After an initial planning year, UF Health Jacksonville and their partners are expected to implement four major tracks in the following three years. These tracks build upon each other and require community engagement with a broad spectrum of stakeholders including community members, academic institutions, businesses and community organizations. These tracks include:

**Track 1** – Develop a comprehensive plan for community engagement of a wide variety of stakeholders across the state through place-based discussions, focus groups, etc.

**Track 2** – Create living research labs (Equity Action Labs) where research is conducted with a user-centered approach and translated for practical use and dissemination.

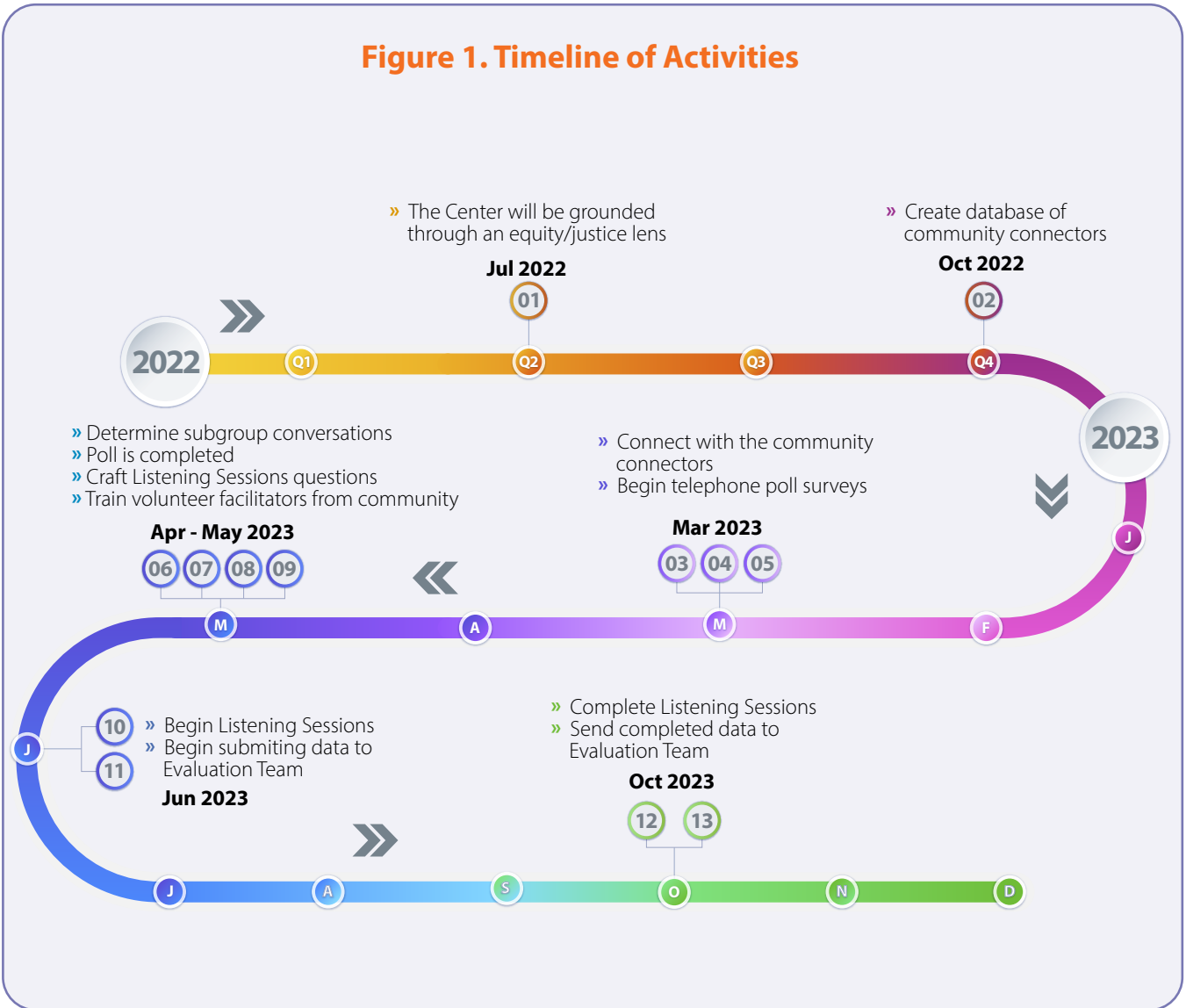
**Track 3** – Provide training that is grounded in the purpose and Center’s design and conducted in a flexible format to attract and engage different audiences.

**Track 4** – Follow-up and Sustainability – Train individuals and organizations to disseminate the information into their respective communities, and share insights with the Center on lessons learned, barriers/solutions, how they have used the training and knowledge gained, as well as resources in their communities.

This report summarizes the implementation of Track 1 and the results of the community engagement activities performed by the Center and its partners. Key components include identifying community connectors, deploying a public opinion survey and hosting numerous listening sessions (LS) across the state. Figure 1 shows the timeline of these activities. ***These results will inform the selection of topics for the Equity Action Labs and will guide in the selection or development of Center-sponsored trainings.***



**Figure 1. Timeline of Activities**



## Selection of Communities

In October 2022, a strategy session was held with the Center Leadership Team (UF Health Jacksonville, 904WARD, Hispanic Federation, and Florida Health Justice Project) and the Center's Advisory Committee to discuss the overall community engagement strategy to be undertaken. At the strategy meeting, participants reviewed data from the Florida Department of Health, U.S. Centers for Disease Control (CDC), and other sources to determine possible focus areas for the community engagement process. In particular, there was a focus on underserved communities with a high social vulnerability index. The Center identified social vulnerability via the CDC Social Vulnerability Index, which includes 16 U.S. census variables in socioeconomic status, household characteristics, racial and ethnic minority status, and housing type & transportation to identify potential negative effects on communities caused by external stresses on human health. The members' experience and knowledge of underserved communities and the strength of existing relationships in several counties were also taken into consideration.

A Community Engagement Team was formed and was led by two of the Center's partners, 904WARD and Hispanic Federation. Through a series of strategy meetings with the Community Engagement Team and Center leadership, 9 counties were identified as the initial focus areas. The selection of these counties was based on the following criteria:

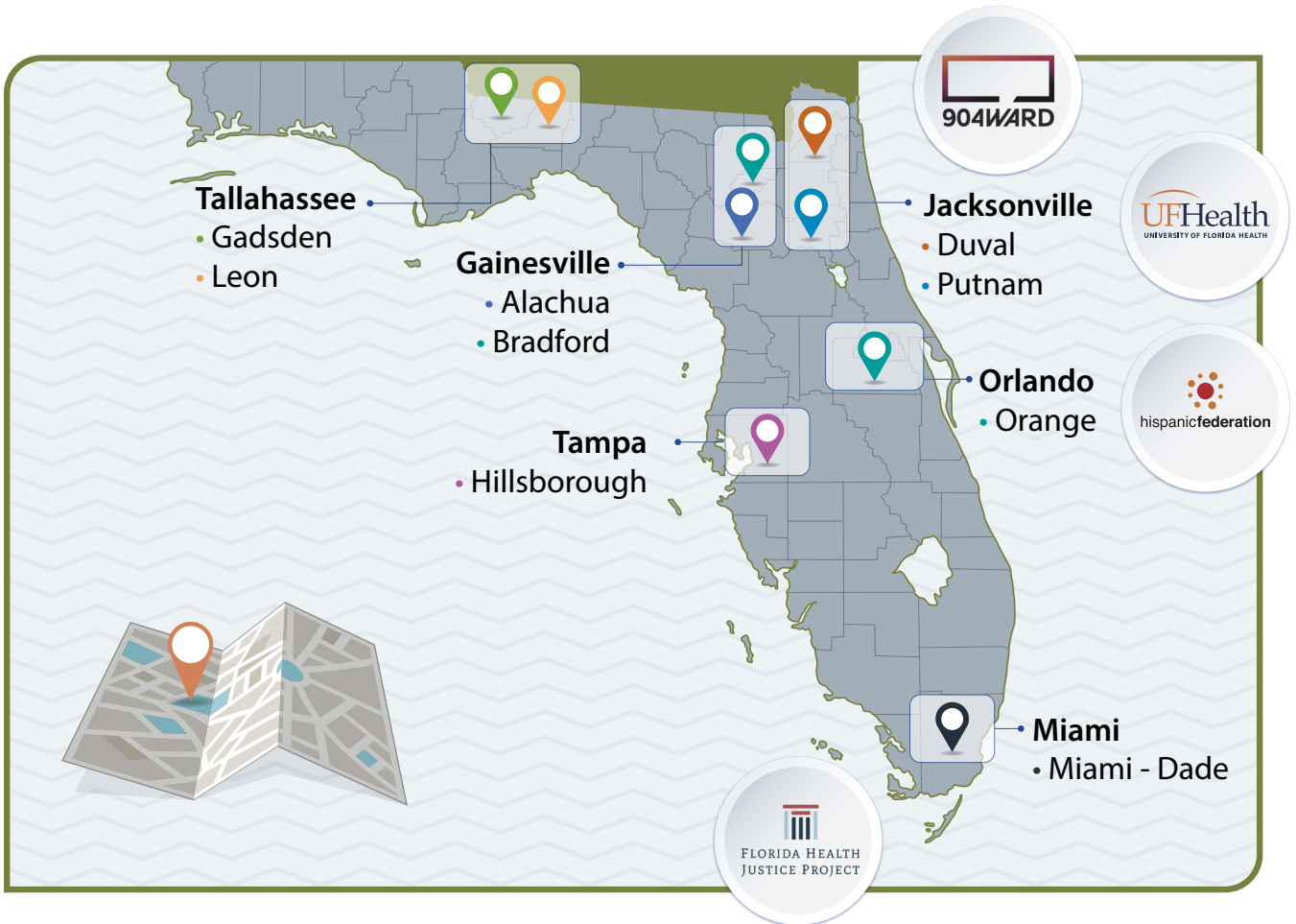
1. Strength of existing relationships with counties nearest to partner headquarters. The Center values the efforts required to build trusting partnerships within the community. In order to launch an effective and responsive plan of listening, learning and unlearning, the Center

partners started where their collective presence was the strongest.

2. Knowledge of existing data and/or needs assessments the Center could leverage. Avoiding redundant and extractive approaches in communities already burdened was crucial. The Center's staff emphasized the importance of being invited into communities. The Center staff and partners had the opportunity to meet with numerous organizations involved in addressing health and social inequities to glean insights, share data, and understand historic successes and failures in their communities.
3. Existing financial investments to communities that could influence the momentum and impact of the Center's work, most importantly, sustainability. In the early stages of community engagement, establishing enduring and sustainable change requires the strategic and thoughtful linkage of resources.

The counties intentionally included a mixture of rural and urban areas with diverse populations in North, Central and South Florida. They include Alachua, Bradford, Duval, Gadsden, Leon, and Putnam Counties in North Florida, Orange and Hillsborough Counties in Central Florida, and Miami-Dade County in South Florida. See Figure 1 for a map of the selected counties. Within these communities, *additional sub-populations of interest include people with disabilities, pregnant women, people who have been incarcerated, immigrants, those experiencing homelessness or those with unstable housing, individuals who identify as LGBTQ+, youth, and racial and ethnic minority groups.*

**Figure 2. Community Engagement Priority Areas**



## Public Opinion Survey



The Center engaged the Public Opinion Research Lab (PORN) at the University of North Florida (UNF) to field a survey to collect preliminary data in the selected counties (Alachua, Bradford, Duval, Gadsden, Hillsborough, Leon, Miami-Dade, Orange and Putnam Counties). The survey was intended to provide information on key issues that can be explored further during the community listening sessions. A variety of topics were explored including social determinants/drivers of health, safety, access to health and social services, and residents' experiences in receiving medical care. The survey included 46 questions including 5 demographic questions.

### Methodology

This survey was implemented utilizing a dual frame, multi-modal design, incorporating both telephone and online surveys. An oversample of individuals with annual household incomes less than \$55,000 was performed (n=465). The online survey was administered between April 5 and April 11, 2023 and the telephone data collection took place from April 13 to April 30, 2023. The final sample consisted of 510 responses completed online, and 489 on the telephone, for a total of 999 respondents.

To ensure a representative sample and to adjust for oversampling and nonresponse bias, UNF weighted the data to the adult population of each county. The weighting process had two steps: first, data were weighted to educational attainment for individuals 25 years and older, then to age, sex, race and ethnicity, annual household income, and geography. Demographic weights were calculated using the U.S. Census Bureau's American Community Survey (ACS) 2021 five-year estimates.

The overall margin of error for the study is +/- 3.8 percentage points, including estimated design effect. The margin of error within those who have an annual household income less than \$55,000 is +/- 4.5 percentage points.

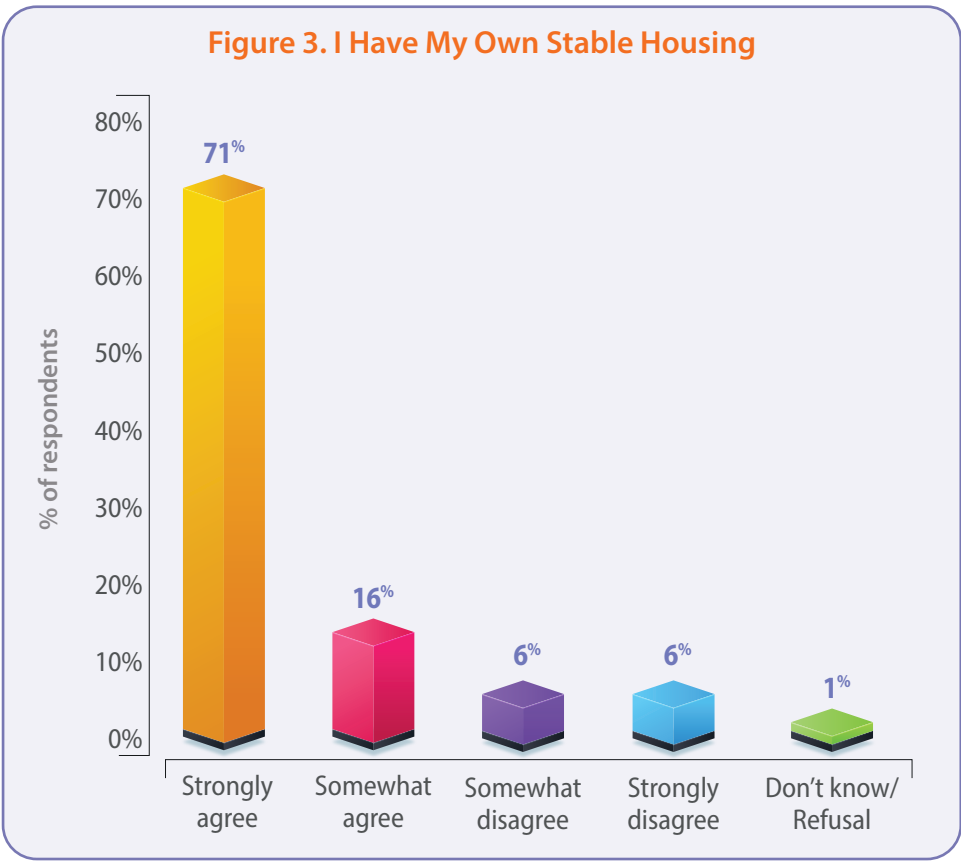
### Results

Overall survey results as well as the breakdown of the questions by county, by race/ethnicity and by income are included in Appendix A. A total of 999 individuals with diverse backgrounds responded to the survey. See Table 1 for their demographics.

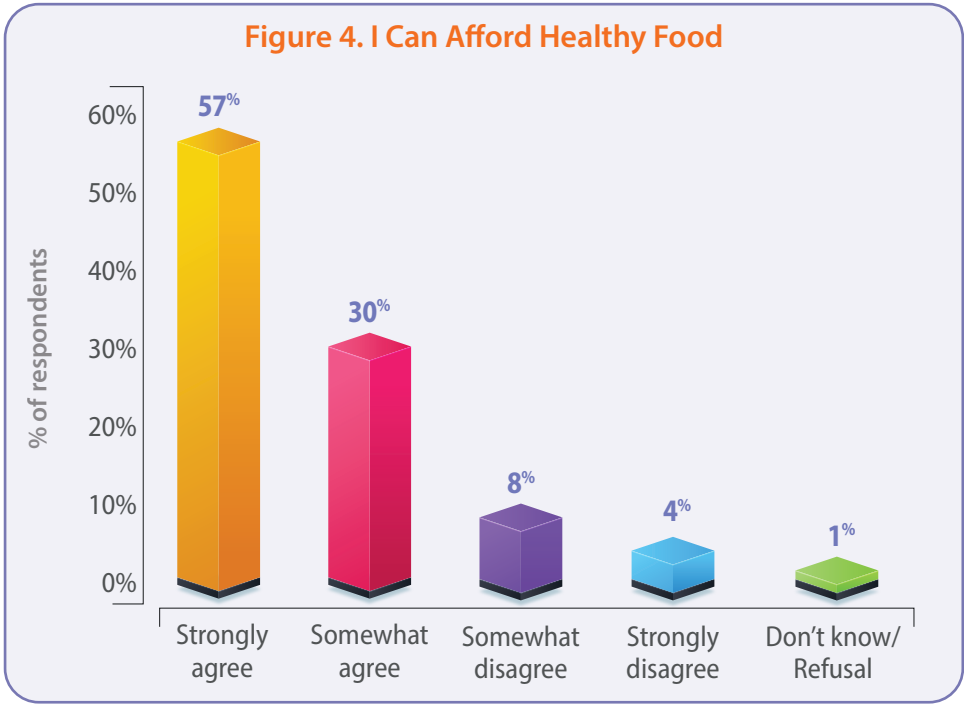
**Table 1. Demographic Characteristics of Survey Respondents (N=999)**

Race/ Ethnicity		Gender Identity	
White/Caucasian	34%	Male	46%
Black/ African American	21%	Female	52%
Hispanic/ Latinx	38%	Other Identity Term	<1%
Other	6%	Don't Know/ Refusal	2%
Don't Know/ Refusal	1%		
Age Group		Household Income	
18-24	13%	Under \$25,000	18%
25-34	18%	\$25,000 – \$54,999	20%
35-44	17%	\$55,000 – \$74,999	15%
45-54	16%	\$75,000 – \$99,999	11%
55-64	17%	\$100,000 – \$149,999	13%
65 or older	19%	\$150,000 – \$199,999	6%
Don't Know/ Refusal	1%	\$200,000 and above	6%
		Don't know/Refusal	12%
Highest Education Level		Resident County	
Less than High school degree	3%	Alachua	6%
High school graduate/ GED	31%	Bradford	1%
Currently in college/has AA degree	27%	Duval	14%
Bachelor's degree	24%	Gadsden	1%
Graduate degree or post-graduate degree	14%	Hillsborough	19%
Don't Know/ Refusal	1%	Leon	6%
		Miami-Dade	34%
		Orange	19%
		Putnam	1%

Some of the key survey questions that guided the focus of the topics to be discussed at the community listening sessions include questions on access to stable housing and healthy foods, community supports and resources, access to health information, and experiences accessing and receiving medical care.

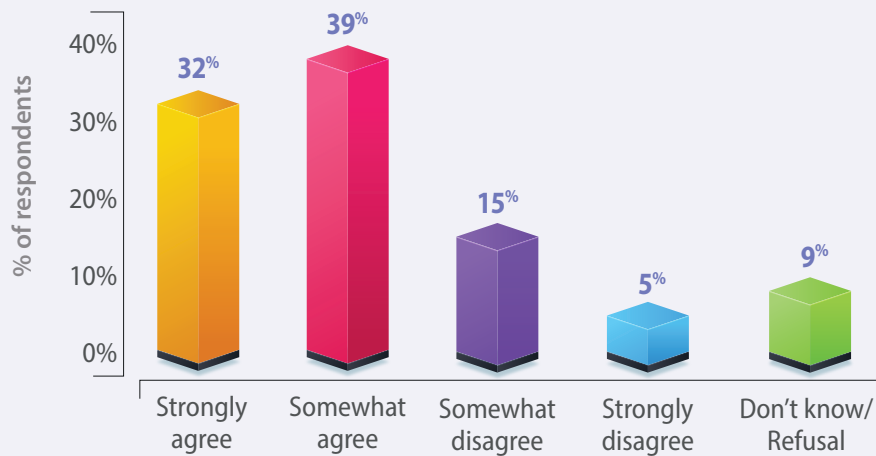


**Figure 3** asked respondents about their housing situation. Most respondents had stable housing; only 6% reported that they strongly disagree with this statement.



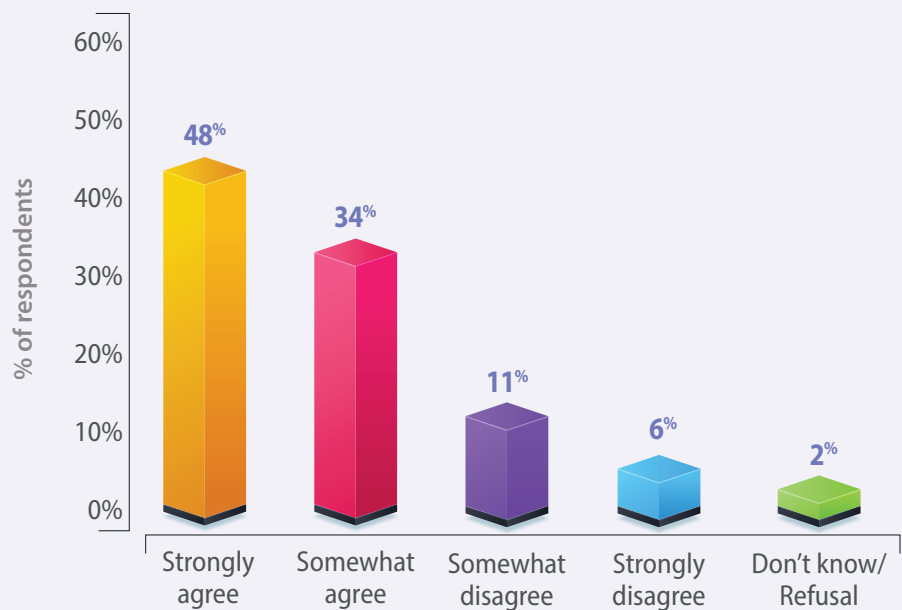
**Figure 4** asked respondents if they can afford healthy food. Nearly 90% strongly or somewhat agreed that they can afford healthy food while 4% strongly disagreed.

**Figure 5. There Are Many Organizations That Help Support People in Need**



**Figure 5** asked if respondents believed that there are many organizations in their community that help support people in need. Over 70% strongly or somewhat agreed to this statement with 5% strongly disagreeing.

**Figure 6. I Know How to Access Health Resources**



**Figure 6** examined if respondents knew how to access health resources in their community. Over 80% strongly or somewhat agreed to this statement while 6% strongly disagreed.



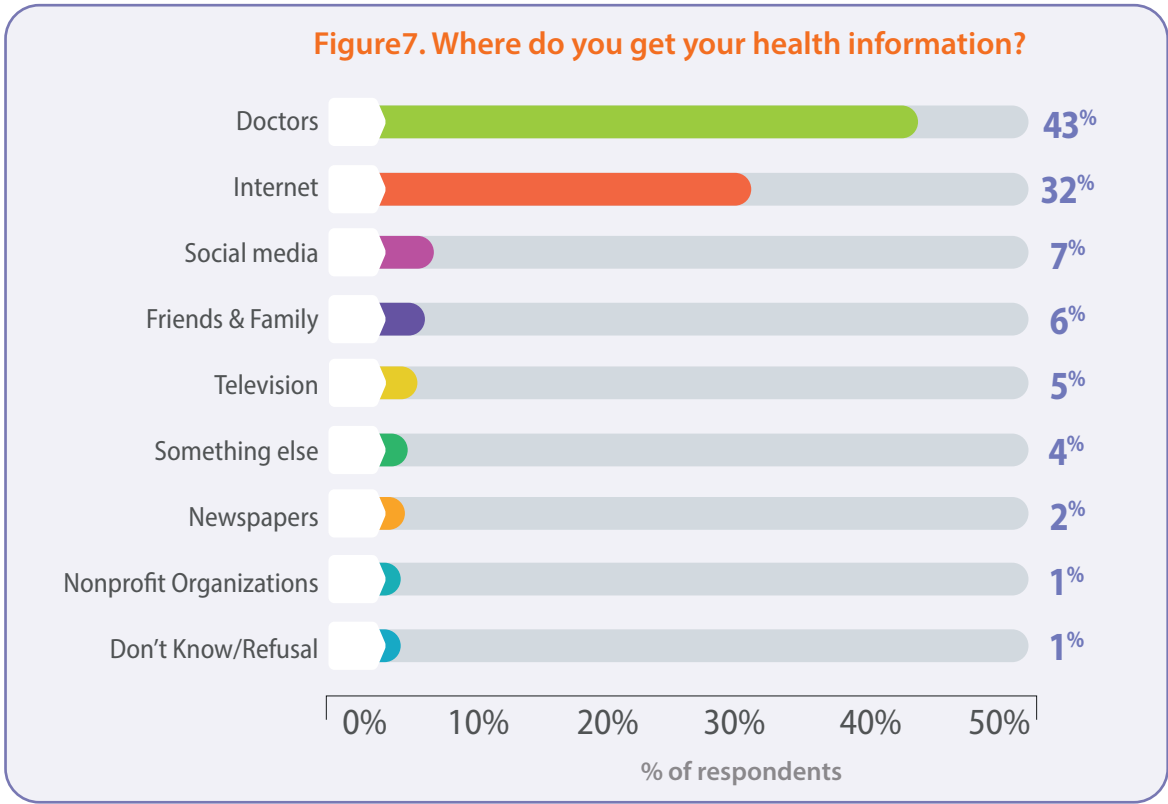


Figure 7 showed that respondents get their health information from doctors more than any other source. The internet is the second highest source for information.

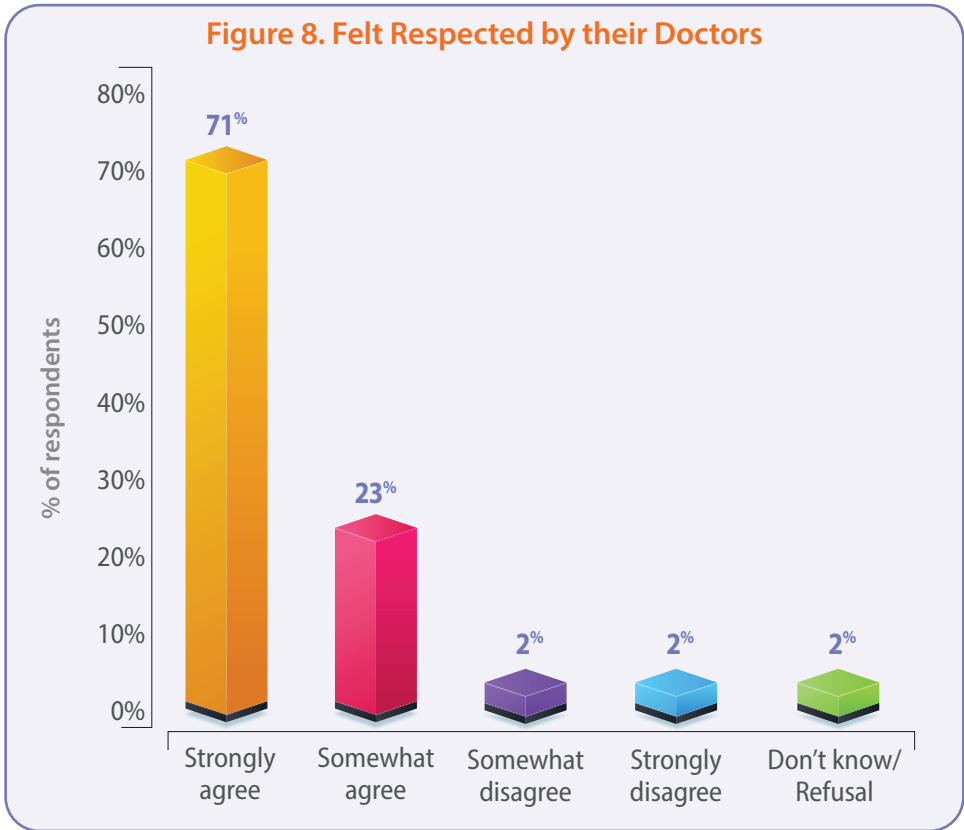
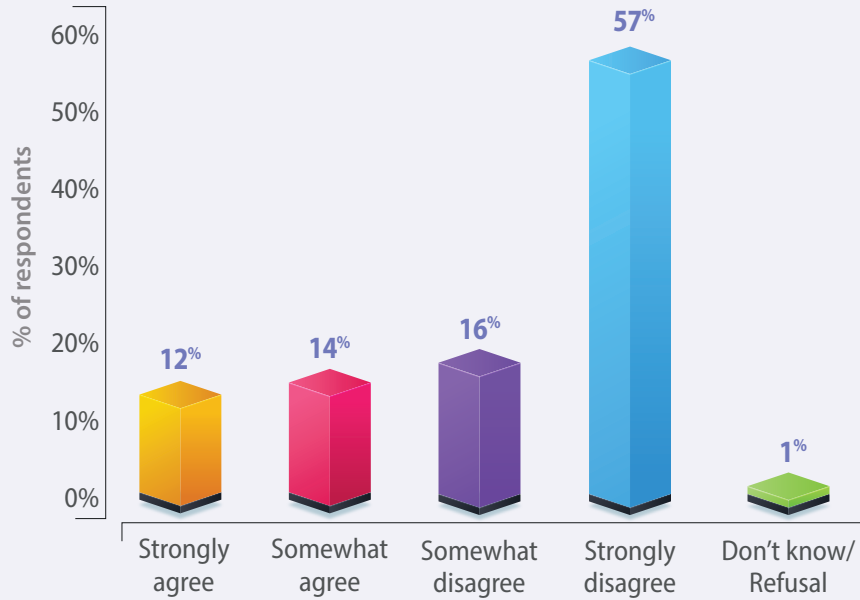


Figure 8 showed that the vast majority of respondents felt respected by their doctors. Only 2% strongly disagreed with this statement

**Figure 9. Experienced Discrimination in a Healthcare Setting**



**Figure 9** examined if respondents ever experienced discrimination at a healthcare setting (includes hospitals, doctors offices, pharmacies, etc.). 26% of respondents strongly or somewhat agreed that they experienced discrimination.

## Community Listening Sessions



In addition to the public opinion survey, community listening sessions were held in the priority counties to share the results of the survey and explore variances of some of the results by county. The listening sessions also gathered additional information on residents' priorities regarding health and social issues and some possible solutions to address these issues. Input from specific sub-populations were also pursued to learn about their unique challenges. These include people with disabilities, people who have been incarcerated, immigrants, those experiencing homelessness or those with unstable housing, people who identify as LGBTQ+, and youth.

Center staff and the Engagement Team identified key community connectors in each county and had conversations with them regarding hosting listening sessions or asked for recommendations for other people or organizations they need to reach out to host these sessions. The team also worked with host organizations to identify potential session facilitators within these counties. Recruiting facilitators with community roots was crucial to ensuring authentic engagement with participants during the listening sessions. Through this preliminary groundwork, they were able to connect with over 160 people/organizations.

Once community-based facilitators were identified, 904WARD and Hispanic Federation provided

facilitation training for these individuals and provided PowerPoint presentations individualized for each county that were used as facilitation guides. Presentations were in English, Spanish, Portuguese, and Haitian Creole. Note takers were also trained from the Center staff and the Engagement Team agencies. Listening session participants were asked to complete session evaluation forms that included a demographic information section. Both participants and facilitators were compensated for their valuable time and willingness to share their perspectives. In addition, the Community Engagement staff provided other meaningful incentives. Meals were also provided. Approximately half of the sessions were recorded and the remainder of the sessions had notes taken by Community Engagement staff.

Listening sessions generally lasted 90 to 120 minutes and the facilitator provided information on the Center for Thriving Communities, the purpose of the community engagement process and the goals for the session. Facilitators also shared key findings from the UNF public opinion survey for the county in which the listening session was held. Participants were asked to respond to these polling data to see if their experiences are reflected within these topics. *Lastly, participants were asked to vote on their top health and social priorities for their county, identify any programs or services they*

*know that may currently address these priorities, and suggest strategies or solutions to address these priority issues.*

From June through October 2023, the Engagement Team held 48 listening sessions that included 1,511 attendees. There were 28 sessions held in the North region, 15 sessions held in the Central region, and 5 sessions held in the South region. The number of sessions for the South region were lower than planned and only represents the immigrant/non-native English speaker community. There were also sessions conducted in Spanish and Portuguese. The Center was granted further opportunities to conduct listening sessions in three additional counties, Desoto, Osceola, and Palm Beach.

With regards to the prioritized populations, there were 15 sessions that were focused on the immigrant population, 4 with the LGBTQ+ population, 4 sessions with youth, 3 sessions with formerly incarcerated individuals, 3 sessions with individuals who are homeless or in unstable housing situations, 2 sessions with mothers/pregnant women and 2 sessions with individuals or family members with disabilities. In addition, there were 19 sessions where the majority of the participants were African American and two with only men. These sessions were not mutually exclusive. For instance, a youth session was also identified as a session with a majority of African American participants.

## Methodology

The Evaluation Team extracted information from transcripts and notes from each session as well as any documents that tabulated the priorities selected by the participants. The following outlines the qualitative analysis approach used to identify themes and recommended solutions from focus groups/listening sessions.

1. Read each transcript one time before extracting data – some sessions had multiple transcripts due to multiple recorders in the room.

2. Reviewed any notes provided for each session.
3. Entered the following details for each focus group into the Excel template: Session name; age (group with largest %); % Hispanic; Race (group with the largest %); % Female; County; Region (North, Central, South); Rurality (rural, urban); specialty population.
4. Reviewed transcripts/notes for evidence supporting the top 3 prioritized issues by participants in each session including quotes for examples, existing resources that may address these issues, and future implementation suggestions and activities.
5. Reviewed transcripts/notes for evidence of additional topics or issues that were discussed but not included in the top 3 priority issues selected.

The priority voting results for each session were tabulated in an Excel file by topic area. A few sessions did not have a clear count and only listed priorities. These were also noted in the Excel document “top 3 or top 5” topics.

## Results

Of the 1,511 people who participated in the listening sessions, 1,225 participants responded to the post-session survey (81% response rate). Table 2 shows participants’ age, gender, ethnicity, and race. 37.1% of survey respondents were between the ages of 41-64, and 30.9% were ages 26-40. 61.0% of survey respondents were female. About half (49.1%) of respondents were Hispanic/Latinx, while 28.7% were Non-Hispanic/Latinx. Almost one-third (30.4%) of respondents identified as African American or Black, 24.6% as Caucasian or White, and 13.4% as Other, while 26.3% of respondents preferred not to answer or did not provide a response to the question about race. Of those who selected Other, 69.4% wrote in some variation of Hispanic/Latinx, 26.2% did not specify further and 4.4% had a mixture of other responses.

**Table 2. Listening Session Survey - Participant Demographics (N=1,225)**

<b>Age</b>	Less than 18 years old	7.8%
	18-25	7.7%
	26-40	30.9%
	41-64	37.1%
	65 or older	13.1%
	Prefer not to say or no response	3.4%
<b>Gender</b>	Female	61.0%
	Male	34.5%
	Non-binary, third gender, or transgender	2.0%
	Prefer not to say or no response	2.5%
<b>Ethnicity</b>	Hispanic/Latinx	49.1%
	Non-Hispanic/Latinx	28.7%
	Prefer not to say or no response	22.2%
<b>Race</b>	African American or Black	30.4%
	Alaskan Native or Native American	2.0%
	Asian or Asian American	0.7%
	Biracial, Multi-Racial	2.2%
	Caucasian or White	24.6%
	Hawaiian or other Pacific Islander	0.4%
	Other, please specify	13.4%
	Prefer not to answer or no response	26.3%

## Priority Topics

There were over 40 topics that participants named as their top priorities in their community. The top three with the highest number of votes from all sessions overall are 1) mental health, 2) housing, and 3) education. These priorities were similar in many of the sub-populations but often in a different order (see Table 3).

**Table 3. Priority Health and Social Topics by Population**

Population	1st Priority	2nd Priority	3rd Priority
<b>Overall (all populations)</b>	Mental health	Housing	Education
<b>Previously incarcerated</b>	Housing	Mental health	Better paying jobs
<b>LGBTQ+</b>	Mental health	Housing	Available resources
<b>Youth</b>	Education	Gun violence	Mental health
<b>Homeless or unstable housing</b>	Housing	Mental health	Better paying jobs
<b>Immigrants/Non-native English speaker</b>	Discrimination	Education	Drug use
<b>African American</b>	Mental health	Housing	Gun violence

There were 2 sessions with individuals and/or family members with disabilities, and one of these sessions did not have a formal vote, thus their priorities are not included in the above table. However, it appears that participants felt that having available resources was a key issue for this population.

## Themes and Quotes

The following tables provide themes derived from the listening session analysis, as well as quotes or summarized information by the facilitators/notetakers on the leading priorities selected by the communities.

Theme	Session Population	Quote or Key Ideas <small>(Note: Some sessions were not recorded, and thus do not have direct quotes.)</small>
<b>Mental Health</b>	Rural African American	"Mental health would fit every one of them [the priorities] because you got people that's really got issues, but they're worried about every little thing on here. Okay? I think mental health would be number one because they worried about housing, they're worried about education, they're worried about their safety. A job. You got a lot of them that's on drugs, which you know, if they can get off of them, it's mental health."
	Youth	The education system in lower grades does not teach about mental health. Some therapists bring their own trauma into the therapy session or do not understand your culture. Immigration comes with mental health issues.
	Homeless	Suffering from mental health due to the living situations they are in, economic crisis, and racism.
	Child bearing women	"Mental health I think is really important here. I think that contributes to a lot of gun violence and drug use and heart health and crime and safety. So I think mental health is, especially in black communities, I think it's very important. A lot of them is end up being locked up, messed up, or because they need some intervention and they don't have it." Participants stated that they do not receive postpartum care, which affects their mental health. One participant shared that she experienced high levels of depression after having her child, and had no help to relieve herself of the stress.
	Immigrant	Participant asked for more resources on what mental health is and how to care for themselves. Participants ask for more mental health resources for their children such as school information and activities outside of school.



Theme	Session Population	Quote or Key Ideas (Note: Some sessions were not recorded, and thus do not have direct quotes.)
Housing	Formerly Incarcerated	"There's no more cheap housing because of that, homelessness is on the rise and it's so spread out that it is not in walking distance."
	General population	"And then of course housing. We have none. We have no, the public housing that we do have is few and far between, and the wait list ranges anywhere from three to five years. So we have people living on the streets for three to five years on average."
	Immigrant	The living conditions are unsafe in the neighborhood participant can afford, despite working over 40 hours a week.
	Urban African American	"My house I rent is 12 years old and I have to do most of the repairs because of my landlord, but I can't afford anywhere else to go."
Education	Immigrant	Participant works too much, feels underpaid, and cannot get a proper education. Participant describes this feeling as a "merry go round." There is no information for education past high school for their kids. Participant shares housing is too expensive in the school district he would like to see his children in.
	Urban African American	"I shouldn't have to take my kid to a Catholic school because the public school sucks."
	Rural African American	"We need education. We need education on things like diabetes and cancer and different things like that."
	Homeless	"Like this country doesn't teach credit or things that our children need to know growing up and they're basically getting brainwashed to work for someone else instead of being entrepreneurs. So like life skills and train skills."

## Other Topics Discussed from the UNF survey

Facilitators also reviewed some of the results from the UNF survey and asked participants if these results resonated with them. The following quotes were some of the major topics that were discussed in the sessions.

Theme	Session Population	Quote or Key Ideas <small>(Note: Some sessions were not recorded, and thus do not have direct quotes.)</small>
Access to Healthcare	Formerly Incarcerated	"There's not a lot of, um, dental care available there. There's some health clinics available, but dental care is not as readily available for us. They'll pull your tooth or something like that. But, like some people need fillings and in order to have a good job, people, people do look at your teeth, right? You know, if you're smiling at customers, you know, waitresses and all this stuff, you know, in order to have a good paying job, you know, you have to have good teeth too."
	Disability	"The accessibility starts way before your physical presence is there. So having the welcoming input, good reviews, and all of this promotes the accessibility that actually gets a person with disability there." "One thing that I have noticed is talking to parents is dental care is really hard for a lot of our participants receive, a lot of times the dentists that they end up going to are more out like in Gainesville or Sarasota and that is just due to the level of care that they need."
	LGBTQ+	"And then not being able to go to the doctors creates such long-term life problems. I haven't been to the dentist since I was 14. I've never been able to afford it. And now to me, having to go to the dentist and try and get work done is going to be a good over 10 grand."
	General	"We have a huge issue here with people not having health insurance because they can't afford it. People not qualifying for Medicaid for various reasons. So people go without insurance."
	Child bearing women	One participant shares they were pregnant and not given the care they needed due to their race. One participant with a newborn baby stated she waited over 4 hours for her sick child at the doctors, only to then find herself being ignored multiple times due to the language barrier. She had an appointment, yet they were taking other patients who arrived after her, before her. She felt as though it was due to her insurance status and her language.
	Rural	"That's also based on what type of medical coverage that you have... like you said, you went outside of the rural area to find a good doctor. Everybody's medical coverage isn't going to do that. The majority of the medical coverage that the people have in the rural area, you're subject to certain doctors. And if you don't have the money in your pocket to pay it yourself, you stuck having to pick between this choice of doctors... The doctor that I go to, he, he's, he's like a clinic. So he take all people but they don't take all insurance. They don't take all insurance. If you have low income families in the rural area and they're subject to Medicaid and Medicare, you have to go to specific doctors on their provider network and that's what you have to choose"

Theme	Session Population	Quote or Key Ideas (Note: Some sessions were not recorded, and thus do not have direct quotes.)
Available Services	African American	Participants mentioned that it can be hard to learn about resources if you don't know how to use a computer or don't have access to one.
	Rural	"They have resources but they don't let the people know what kind of resources they have. They have 'em but you just don't know nothing about 'em."
	Immigrant	The top priority for this session was safety for children when they are not in school. Participants shared that there are no resources or community activities for children, and when they go to the parks, it is unsafe due to drugs and other factors such as crime and gun violence.
	African American	"Mine is more, uh, affordable housing, more resources for getting house repair and the speed bumps around this park for the children's safety. So that's my concern."
Discrimination by Health Providers	Rural	"I walked into Target to pick up my daughter's medicine and the lady said to me when I asked for her medicine, she said, we don't accept Medicaid. I didn't. She just assumed that I have Medicaid."
	Immigrant	<p>"One time, I went to the doctor, and the receptionist told me they could not see me due to me not having insurance, the issue was, I did have insurance, and they told me this because of the color of my skin" (this participant was Afro-Latina).</p> <p>"When a primary doctor sent me to a lung specialist in Orlando, someone at that office discriminated me because I don't know how to speak or write English, they said 'I don't know why they sent you here, you're in a country where you are supposed to know English. I just wanted to cry and leave.'"</p> <p>"Doctors do not speak Portuguese and do not provide translators, so it is impossible to get treated equally."</p>
	Homeless	<p>"I don't believe the discrimination comes with race. I think it's more of the classes that we're in. We have the wealthy and then we have the poor. So basically the poor get treated the way your pockets are and the wealthy, they got the money so they get the best treat."</p> <p>One woman participant noted that "Because as women we're mansplained to or we're not listened to or immediately I'm overweight. Any problem I have is due to my weight not because of something else."</p>
	LGBTQ+	<p>Participant shares being transgender makes it feel like "everything is against us"</p> <p>Doctors are not trained in LGBTQIA+ care, and do not have knowledge on how to care for this population.</p> <p>"I was recently ghosted by a therapist because I asked them to use my correct pronouns and then they just canceled all of my sessions."</p>

Theme	Session Population	Quote or Key Ideas <small>(Note: Some sessions were not recorded, and thus do not have direct quotes.)</small>
Healthy Food Access	Homeless	<p>“Community gardens that also in turn are ran by our schools that teach our children how to grow their own. I grew up on a farm. I truly and personally believe that if every human being on this planet, man, woman, and child over the age of eight years old, raised at least three food bearing plants, there would be nobody on this planet they would've to pay for another vegetable in their life.”</p>
	Immigrant	<p>Participants identified the following issues about healthy food access:</p> <ul style="list-style-type: none"> <li>▸ No education on how to be healthy, and no education on what healthy food is.</li> <li>▸ Overworked and there is no time to make healthy food. When having children who are of different ages, it is hard to go and purchase healthy food due to them not having the time.</li> <li>▸ The value is low for healthy eating.</li> </ul>
	Formerly Incarcerated	<p>“Not have time after work. You might have to go pick the kids up from school. They go pick your wife up from work, then you might be able to get home. By that time it's seven, eight and you don't want to cook. You don't want to go grocery shopping. You just want to get something quick and go on about your day and start over the next day.”</p>
	African American	<p>“Nobody do no cooking no more. You know, we go out to eat, eat out, and I can't afford it - didn't have no money.”</p> <p>“I think a little bit different about healthy food now, different from what it is to how it's grown, how it's transported, how it's stored. Because what happens is when you get most commercial stores like Walmart, even though you're going to get vegetables, my grandma used to say something to me when I tell her, I said I can go grab that from Walmart. She said, baby a tomato ain't supposed to last two weeks.”</p>
	Rural	<p>“Whatever research you're doing, this should be priority number one is to have a grocery store so we can buy grocery fresh fruit and vegetables.... Because you don't have fresh and vegetables, it is going to increase the health disparities.”</p>



## Existing Resources

During listening sessions, participants were asked “What are some things that are already working in your communities to address some of these issues?” The following responses highlight a few existing resources along with the county of origin.

**Health Programs.** Some participants named programs that they had experience with such as Birth Culture (Alachua), Pine Castle’s Psychosocial Rehabilitation Program (Duval), Doula program (Duval), LGBTQ+ providers like Spektrum Health or Bliss Health (Orange), and Hope Haven programs for children with special needs (Duval) as examples of existing resources. For rural communities, the health department or federally qualified health centers were mentioned as a health resource for the residents in these communities. Telehealth was also popular to access providers not readily available in their community (rural counties) as well as community health fairs and church health ministries.

**Other Programs or Services.** Goodwill and CareerSource (Leon) were mentioned for those needing help finding a job, the Community Weatherization Coalition (Alachua) helps with home maintenance, Three Rivers Legal Services (North FL) helps with disability applications, and youth programs such as Unified Community Investors, Jewels of the Future, Cleaning up Today’s Society (CUTS), and Cure Violence (Duval) were each mentioned as community resources. Churches and community centers were also mentioned as locations where health and social services programs were available such as food distributions, health fairs, and education programs. Transportation services are often provided by Medicaid and some other insurance plans for medical visits.

**Information Resources.** The library was mentioned by several participants as a resource, especially getting access to the internet. Google and WebMD were often cited as sources where participants got information about health issues or resources in their community.



## Solutions from the Community

During the listening sessions, participants were asked “What are some things you would like to see in your community to address these issues?” and “What are some ideas you have?” In general, several listening session participants mentioned the need for better coordination across health services to ensure continuity of care. Another common theme noted across the sub-populations was the need for more cultural sensitivity by healthcare providers.

Below are some of the solutions for the top 3 priority areas from the overall population of participants as well as some of the other top issues in the sub-populations.

**Mental Health.** Several of the listening sessions mentioned the need for more mental health providers for both adults and children as well as more information on how to access these services. It was recommended that mental health services be offered at the schools as well as drug use prevention. The participants also cited that there were not enough African American or Hispanic mental health providers who could better understand their cultural background and experiences.

**Housing.** A majority of participants expressed the view that current rental and home prices are unaffordable for those seeking immediate housing. Participants recommended more programs to help families own homes including financial counseling and assistance, legal assistance, and home repair

training. For those who are formerly incarcerated, participants suggested more halfway houses or other low rent housing that does not discriminate against people with criminal records.

**Education.** Many participants suggested teaching life skills such as financial literacy, cooking and nutrition, and managing interpersonal relationships without violence - either in schools or in community-based organizations. Participants also highlighted the necessity for skills preparation to navigate the job market, including acquiring trade or computer skills, and other competencies relevant to the current job market. Assistance in applying to college and funding for college was also cited by some participants. Intergenerational learning programs were suggested where older people teach life skills to younger people and younger people teach computer skills to older people.

**Available Resources.** Most sessions discussed that there may be available resources but there needs to be better communication about these resources using both digital and physical modes of communication. Digital strategies include having a trusted and reliable internet search site that coordinates available resources such as United Way 211, local government websites, and Facebook or other social media sites for sharing information, with emphasis on resources for persons with disabilities. Physical modes include health fairs, sharing information (flyers, brochures etc.) in public spaces, and having community health workers/navigators doing outreach in communities.





## Limitations

There were several limitations in the community engagement process that may have skewed the results. With regards to the UNF public opinion survey, over one-third of the responses came from Miami-Dade County while the rural counties (Bradford, Gadsden, Putnum) each only accounted for 1% of the responses. The largest race/ethnicity category cited by the respondents was Hispanic/Latinx which correlates with the oversampling of Miami-Dade County residents.

With regards to the community listening sessions, the majority of the listening sessions were held in North Florida counties (58%). Only 5 sessions were held in South Florida and these were only with immigrant populations. Overall, approximately 50% of the participants were Hispanic/Latinx, with the majority of these participants from Central and South Florida. Due to the many different facilitators who conducted the listening sessions across the state, there was significant variation in how the sessions were implemented and documented. Almost half of the sessions were not recorded or transcribed. Some of these sessions had limited notes.





# Appendix

## Overall Survey Results

### What Florida county do you live in?

n=999

Alachua	6%
Bradford	1%
Duval	14%
Gadsden	1%
Hillsborough	19%
Leon	6%
Miami-Dade	34%
Orange	19%
Putnam	1%

To what extent do you agree or disagree with the following statements:

### I have clean, clear, and safe drinking water where I live.

n=999

Strongly agree	60%
Somewhat agree	27%
Somewhat disagree	7%
Strongly disagree	4%
Don't know/Refusal	2%

### The place where I live is free from pest infestation.

n=999

Strongly agree	48%
Somewhat agree	32%
Somewhat disagree	13%
Strongly disagree	7%
Don't know/Refusal	1%

**I live in a place that is free from harmful contaminants.**

n=999

Strongly agree	54%
Somewhat agree	29%
Somewhat disagree	12%
Strongly disagree	3%
Don't know/Refusal	2%

**I live in a neighborhood where there is a lot of crime.**

n=999

Strongly agree	12%
Somewhat agree	15%
Somewhat disagree	26%
Strongly disagree	46%
Don't know/Refusal	1%

**I feel safe in my home.**

n=999

Strongly agree	70%
Somewhat agree	24%
Somewhat disagree	3%
Strongly disagree	2%
Don't know/Refusal	1%

**The sidewalks in my neighborhood are safe for walking.**

n=999

Strongly agree	55%
Somewhat agree	28%
Somewhat disagree	5%
Strongly disagree	7%
Don't know/Refusal	5%

**I have my own stable housing.**

n=999

Strongly agree	71%
Somewhat agree	16%
Somewhat disagree	6%
Strongly disagree	6%
Don't know/Refusal	1%

**I can afford healthy food.**

n=999

Strongly agree	57%
Somewhat agree	30%
Somewhat disagree	8%
Strongly disagree	4%
Don't know/Refusal	1%

**There are many organizations in my community that help support people in need.**

n=999

Strongly agree	32%
Somewhat agree	39%
Somewhat disagree	15%
Strongly disagree	5%
Don't know/Refusal	9%

**I know how to access resources in my community for my health.**

n=999

Strongly agree	48%
Somewhat agree	34%
Somewhat disagree	11%
Strongly disagree	6%
Don't know/Refusal	2%

**I have people locally who support me in trying to be my healthiest self.**

n=999

Strongly agree	47%
Somewhat agree	29%
Somewhat disagree	14%
Strongly disagree	8%
Don't know/Refusal	1%

**When voting, I consider how candidates will make decisions about healthcare.**

n=999

Strongly agree	56%
Somewhat agree	32%
Somewhat disagree	6%
Strongly disagree	4%
Can't/doesn't Vote	2%
Don't know/Refusal	1%

**When it comes to information about health, where do you get most of your information?**

n=999

Doctors	43%
Television	5%
Newspapers	2%
The internet	32%
Social media	7%
Friends & Family	6%
Nonprofit Organizations	1%
Politicians	<1%
Something else	4%
Don't know/Refusal	1%

**Would you say that, in general, your health is...**

n=999

Excellent	17%
Very good	37%
Good	29%
Fair	14%
Poor	4%
Don't know/Refusal	<1%

**Please answer the following questions based on your experience with your doctor.**

**My doctor respects me.**

n=999

Strongly agree	71%
Somewhat agree	23%
Somewhat disagree	2%
Strongly disagree	2%
Don't know/Refusal	2%

**My doctor takes the time to listen to my concerns.**

n=999

Strongly agree	65%
Somewhat agree	25%
Somewhat disagree	5%
Strongly disagree	2%
Don't know/Refusal	3%

**My doctor understands my culture and language.**

n=999

Strongly agree	69%
Somewhat agree	22%
Somewhat disagree	4%
Strongly disagree	2%
Don't know/Refusal	3%

**I have a hard time getting an appointment to see my doctor.**

n=999

Strongly agree	16%
Somewhat agree	20%
Somewhat disagree	24%
Strongly disagree	36%
Don't know/Refusal	3%

**Do you have medical insurance?**

n=999

Yes	92%
No	8%
Don't know/Refusal	<1%

**What kind of medical insurance do you have? Select all that apply.**

n=917

Insurance through your employer	44%
Self-purchased insurance	17%
Medicare (including Medicare supplemental providers)	27%
Medicaid (or fully subsidized through healthcare.gov)	18%
Something else:	5%
Don't know/Refusal	2%

\*Column totals are greater than 100% due to select all question

**It is easy for me to enroll in health insurance.**

n=917

Strongly agree	55%
Somewhat agree	30%
Somewhat disagree	7%
Strongly disagree	5%
Don't know/Refusal	3%



**My health insurance plan offers coverage for most things I need.**

n=917

Strongly agree	40%
Somewhat agree	39%
Somewhat disagree	13%
Strongly disagree	7%
Don't know/Refusal	1%

**Why do you not have medical insurance? Select all that apply:**

n=85

It is too expensive.	56%
My job does not offer health insurance.	22%
I am not eligible for coverage.	19%
Signing up was too difficult or confusing.	7%
I cannot find a plan that meets my needs.	4%
I lost my job.	12%
I do not need or want medical insurance.	7%
Other:	12%
Don't know/Refusal	9%

\*Column totals are greater than 100% due to select all question

**Does your job offer paid leave when you need to go to the doctor?**

n=999

Yes	38%
No	29%
Not currently employed	31%
Don't know/Refusal	2%

**My job allows me to take time off to go to a doctor's appointment easily.**

n=666

Strongly agree	58%
Somewhat agree	27%
Somewhat disagree	9%
Strongly disagree	5%
Don't know/Refusal	<1%

**I can afford to go to the doctor whenever I need to go.**

n=999

Strongly agree	53%
Somewhat agree	27%
Somewhat disagree	11%
Strongly disagree	8%
Don't know/Refusal	<1%

**I can easily find childcare to go to the doctor.**

n=999

Strongly agree	23%
Somewhat agree	12%
Somewhat disagree	5%
Strongly disagree	8%
Don't know/Refusal/Not Applicable	52%

**In the past 5 years, have you or someone in your household been told that you do not qualify for any kind of government assistance?**

n=999

Yes	28%
No	39%
I haven't applied for government assistance in the past 5 years	31%
Other:	1%
Don't know/Refusal	1%

**The types of doctors I need are close by where I live.**

n=999

Strongly agree	56%
Somewhat agree	30%
Somewhat disagree	9%
Strongly disagree	5%
Don't know/Refusal	1%

**The doctors nearby have a good reputation in my community.**

n=999

Strongly agree	53%
Somewhat agree	33%
Somewhat disagree	6%
Strongly disagree	2%
Don't know/Refusal	5%

**I do not trust doctors.**

n=999

Strongly agree	9%
Somewhat agree	17%
Somewhat disagree	25%
Strongly disagree	48%
Don't know/Refusal	1%

**I have experienced discrimination in the healthcare setting.**

n=999

Strongly agree	12%
Somewhat agree	14%
Somewhat disagree	16%
Strongly disagree	57%
Don't know/Refusal	1%

**If I am not happy with a doctor, I would find a new one.**

n=999

Strongly agree	71%
Somewhat agree	18%
Somewhat disagree	6%
Strongly disagree	4%
Don't know/Refusal	1%

### If I am not happy with a doctor, I would inform the insurance company.

n=999

Strongly agree	35%
Somewhat agree	25%
Somewhat disagree	21%
Strongly disagree	18%
Don't know/Refusal	2%

### When a doctor says something that I do not understand, I ask questions for clarity.

n=999

Strongly agree	79%
Somewhat agree	16%
Somewhat disagree	4%
Strongly disagree	1%
Don't know/Refusal	1%

### When a doctor recommends a course of treatment that I disagree with, I tell them.

n=999

Strongly agree	59%
Somewhat agree	28%
Somewhat disagree	8%
Strongly disagree	3%
Don't know/Refusal	2%

### I have to travel to too many different places for my medical care.

n=999

Strongly agree	15%
Somewhat agree	20%
Somewhat disagree	23%
Strongly disagree	41%
Don't know/Refusal	2%

**Are you the primary caregiver to a child under 18 years old?**

n=999

Yes	30%
No	69%
Don't know/Refusal	1%

**Are we reaching you on a landline or cell phone? (unweighted)**

[Phone sample only]

n=489

Landline	1%
Cellphone	96%
Don't know/Refusal	3%

**Survey Mode (unweighted)**

n=999

Phone	49%
Online	51%

**Interview Language (unweighted)**

n=999

English	99%
Spanish	1%

## Survey Results by Race

I have clean, clear, and safe drinking water where I live.

	White/Caucasian	Black/African American	Hispanic/Latino	Other	Total
Strongly agree	57.90%	60.80%	62.30%	61.30%	60.40%
Somewhat agree	32.40%	23.00%	24.00%	29.00%	27.00%
Somewhat disagree	6.20%	5.40%	8.70%	8.10%	7.10%
Strongly disagree	2.60%	5.40%	4.00%		3.60%
DK/Ref	0.90%	5.40%	1.10%	1.60%	1.90%
Total	100.00%	100.00%	100.00%	100.00%	100.00%

The place where I live is free from pest infestation.

	White/Caucasian	Black/African American	Hispanic/Latino	Other	Total
Strongly agree	49.00%	46.30%	47.80%	45.20%	47.70%
Somewhat agree	31.70%	27.80%	36.10%	22.60%	32.00%
Somewhat disagree	13.20%	11.20%	11.60%	21.00%	12.70%
Strongly disagree	5.60%	12.20%	4.20%	9.70%	6.70%
DK/Ref	0.60%	2.40%	0.30%	1.60%	0.90%
Total	100.00%	100.00%	100.00%	100.00%	100.00%

I live in a place that is free from harmful contaminants.

	White/Caucasian	Black/African American	Hispanic/Latino	Other	Total
Strongly agree	54.30%	57.60%	51.60%	50.80%	53.70%
Somewhat agree	31.40%	23.20%	31.20%	23.80%	29.10%
Somewhat disagree	10.30%	12.80%	11.60%	23.80%	12.20%
Strongly disagree	3.20%	3.40%	2.40%	1.60%	2.80%
DK/Ref	0.90%	3.00%	3.20%		2.10%
Total	100.00%	100.00%	100.00%	100.00%	100.00%

I live in a neighborhood where there is a lot of crime.

	White/Caucasian	Black/African American	Hispanic/Latino	Other	Total
Strongly agree	10.00%	17.60%	11.90%	1.60%	11.80%
Somewhat agree	16.20%	19.50%	12.40%	11.50%	15.10%
Somewhat disagree	26.20%	22.90%	27.00%	27.90%	25.90%
Strongly disagree	46.20%	38.00%	47.60%	59.00%	45.80%
DK/Ref	1.50%	2.00%	1.10%		1.30%
Total	100.00%	100.00%	100.00%	100.00%	100.00%

**I feel safe in my home.**

	White/Caucasian	Black/African American	Hispanic/Latino	Other	Total
Strongly agree	67.70%	67.60%	76.20%	58.10%	70.40%
Somewhat agree	26.70%	27.50%	19.00%	30.60%	24.20%
Somewhat disagree	3.20%	2.50%	2.10%	11.30%	3.10%
Strongly disagree	1.80%	1.50%	2.10%		1.70%
DK/Ref	0.60%	1.00%	0.50%		0.60%
Total	100.00%	100.00%	100.00%	100.00%	100.00%

**The sidewalks in my neighborhood are safe for walking.**

	White/Caucasian	Black/African American	Hispanic/Latino	Other	Total
Strongly agree	47.90%	58.30%	59.90%	52.40%	55.00%
Somewhat agree	25.90%	23.30%	30.60%	34.90%	27.70%
Somewhat disagree	7.40%	3.40%	4.50%	9.50%	5.60%
Strongly disagree	9.10%	9.20%	3.70%	3.20%	6.70%
DK/Ref	9.70%	5.80%	1.30%		5.10%
Total	100.00%	100.00%	100.00%	100.00%	100.00%

**I have my own stable housing.**

	White/Caucasian	Black/African American	Hispanic/Latino	Other	Total
Strongly agree	74.40%	74.10%	68.40%	57.10%	71.00%
Somewhat agree	15.30%	14.60%	16.70%	22.20%	16.10%
Somewhat disagree	5.30%	5.40%	6.10%	12.70%	6.10%
Strongly disagree	5.00%	4.40%	8.50%	7.90%	6.40%
DK/Ref		1.50%	0.30%		0.40%
Total	100.00%	100.00%	100.00%	100.00%	100.00%

**I can afford healthy food.**

	White/Caucasian	Black/African American	Hispanic/Latino	Other	Total
Strongly agree	57.20%	62.30%	55.60%	44.40%	56.80%
Somewhat agree	29.30%	23.50%	33.10%	36.50%	30.00%
Somewhat disagree	8.50%	8.80%	7.90%	9.50%	8.40%
Strongly disagree	3.80%	4.90%	3.40%	9.50%	4.30%
DK/Ref	1.20%	0.50%			0.50%
Total	100.00%	100.00%	100.00%	100.00%	100.00%



**There are there many organizations in my community that help support people in need.**

	White/Caucasian	Black/African American	Hispanic/Latino	Other	Total
Strongly agree	36.10%	34.80%	30.40%	16.10%	32.40%
Somewhat agree	41.60%	33.80%	37.30%	46.80%	38.70%
Somewhat disagree	10.90%	13.70%	18.00%	32.30%	15.50%
Strongly disagree	2.90%	6.90%	6.60%	3.20%	5.20%
DK/Ref	8.50%	10.80%	7.70%	1.60%	8.20%
Total	100.00%	100.00%	100.00%	100.00%	100.00%

**I know how to access resources in my community for my health.**

	White/Caucasian	Black/African American	Hispanic/Latino	Other	Total
Strongly agree	49.30%	52.50%	45.40%	44.40%	48.10%
Somewhat agree	33.10%	31.40%	37.20%	28.60%	34.00%
Somewhat disagree	11.40%	7.40%	9.20%	22.20%	10.40%
Strongly disagree	4.70%	5.90%	6.60%	4.80%	5.70%
DK/Ref	1.50%	2.90%	1.60%		1.70%
Total	100.00%	100.00%	100.00%	100.00%	100.00%

**I have people locally who support me in trying to be my healthiest self.**

	White/Caucasian	Black/African American	Hispanic/Latino	Other	Total
Strongly agree	46.30%	52.00%	47.20%	40.30%	47.50%
Somewhat agree	27.00%	25.00%	32.20%	37.10%	29.20%
Somewhat disagree	16.40%	13.20%	11.60%	16.10%	13.90%
Strongly disagree	7.30%	9.30%	8.40%	3.20%	7.90%
DK/Ref	2.90%	0.50%	0.50%	3.20%	1.50%
Total	100.00%	100.00%	100.00%	100.00%	100.00%

**When voting, I consider how candidates will make decisions about healthcare.**

	White/Caucasian	Black/African American	Hispanic/Latino	Other	Total
Strongly agree	52.50%	59.00%	56.10%	54.00%	55.30%
Somewhat agree	37.00%	23.90%	31.00%	36.50%	31.90%
Somewhat disagree	5.60%	5.40%	7.10%	4.80%	6.10%
Strongly disagree	2.90%	7.30%	2.60%	3.20%	3.70%
Can't/Doesn't Vote	1.50%	3.40%	2.60%		2.20%
DK/Ref	0.60%	1.00%	0.50%	1.60%	0.70%
Total	100.00%	100.00%	100.00%	100.00%	100.00%

**When it comes to information about health, where do you get most of your information?**

	White/Caucasian	Black/African American	Hispanic/Latino	Other	Total
Doctors	45.70%	43.80%	39.70%	40.30%	42.70%
Television	3.20%	6.40%	7.10%	3.20%	5.40%
Newspapers	1.20%	3.90%	1.10%		1.60%
The internet	31.40%	26.10%	33.30%	45.20%	31.90%
Social media	5.00%	7.90%	6.90%	9.70%	6.60%
Friends & Family	7.00%	3.40%	7.40%	1.60%	6.10%
Nonprofit Organizations	1.80%	1.50%	0.80%		1.20%
Politicians	0.30%				0.10%
Something else:	3.20%	5.90%	2.60%		3.40%
DK/Ref	1.20%	1.00%	1.10%		1.00%
Total	100.00%	100.00%	100.00%	100.00%	100.00%

**Would you say that, in general, your health is...**

	White/Caucasian	Black/African American	Hispanic/Latino	Other	Total
Excellent	13.50%	17.20%	20.20%	12.50%	16.80%
Very good	38.50%	33.80%	36.10%	37.50%	36.50%
Good	26.80%	27.50%	30.80%	26.60%	28.40%
Fair	16.50%	17.20%	10.60%	14.10%	14.20%
Poor	4.70%	3.90%	1.90%	9.40%	3.80%
DK/Ref		0.50%	0.50%		0.30%
Total	100.00%	100.00%	100.00%	100.00%	100.00%

**My doctor respects me.**

	White/Caucasian	Black/African American	Hispanic/Latino	Other	Total
Strongly agree	64.90%	73.00%	76.70%	61.30%	70.90%
Somewhat agree	26.00%	22.50%	18.50%	37.10%	23.10%
Somewhat disagree	3.80%	1.00%	1.30%	1.60%	2.10%
Strongly disagree	1.80%	2.50%	1.60%		1.70%
DK/Ref	3.50%	1.00%	1.90%		2.10%
Total	100.00%	100.00%	100.00%	100.00%	100.00%

### My doctor takes the time to listen to my concerns.

	White/Caucasian	Black/African American	Hispanic/Latino	Other	Total
Strongly agree	62.20%	70.70%	68.80%	43.50%	65.30%
Somewhat agree	27.60%	19.50%	22.80%	46.80%	25.30%
Somewhat disagree	4.70%	6.80%	4.50%	9.70%	5.40%
Strongly disagree	2.10%	2.00%	1.10%		1.50%
DK/Ref	3.50%	1.00%	2.90%		2.50%
Total	100.00%	100.00%	100.00%	100.00%	100.00%

### My doctor understands my culture and language.

	White/Caucasian	Black/African American	Hispanic/Latino	Other	Total
Strongly agree	73.20%	67.30%	69.30%	45.20%	68.70%
Somewhat agree	19.70%	25.40%	19.80%	43.50%	22.40%
Somewhat disagree	2.90%	3.90%	5.80%	4.80%	4.40%
Strongly disagree	0.60%	2.40%	1.60%	6.50%	1.70%
DK/Ref	3.50%	1.00%	3.40%		2.70%
Total	100.00%	100.00%	100.00%	100.00%	100.00%

### I have a hard time getting an appointment to see my doctor.

	White/Caucasian	Black/African American	Hispanic/Latino	Other	Total
Strongly agree	14.70%	15.30%	17.20%	24.20%	16.40%
Somewhat agree	20.90%	18.20%	21.70%	16.10%	20.30%
Somewhat disagree	26.20%	18.20%	26.50%	24.20%	24.50%
Strongly disagree	35.30%	46.30%	31.50%	35.50%	36.10%
DK/Ref	2.90%	2.00%	3.20%		2.60%
Total	100.00%	100.00%	100.00%	100.00%	100.00%

### Do you have medical insurance?

	White/Caucasian	Black/African American	Hispanic/Latino	Other	Total
Yes	93.20%	88.70%	92.10%	88.90%	91.60%
No	6.20%	10.80%	7.90%	11.10%	8.10%
DK/Ref	0.60%	0.50%			0.30%
Total	100.00%	100.00%	100.00%	100.00%	100.00%

**What kind of medical insurance do you have?**

	White/Caucasian	Black/African American	Hispanic/Latino	Other	Total
Insurance through your employer	46.90%	40.70%	42.50%	39.30%	43.50%
Self-purchased insurance (or parent/guardian-purchased)	13.10%	15.90%	22.70%	3.60%	16.80%
Medicare (including Medicare supplemental providers)	33.40%	24.20%	20.30%	34.50%	26.60%
Medicaid (or fully subsidized plans through healthcare.gov)	14.40%	26.90%	16.70%	25.50%	18.50%
Something else:	4.40%	6.60%	4.90%	7.30%	5.20%
Don't know/Refusal	1.30%	1.10%	1.70%		1.30%
Total	100.00%	100.00%	100.00%	100.00%	100.00%

**It is easy for me to enroll in health insurance.**

	White/Caucasian	Black/African American	Hispanic/Latino	Other	Total
Strongly agree	57.90%	58.20%	50.10%	52.70%	54.70%
Somewhat agree	27.50%	27.50%	34.70%	30.90%	30.50%
Somewhat disagree	7.90%	7.10%	6.60%	7.30%	7.20%
Strongly disagree	4.10%	3.80%	5.40%	3.60%	4.50%
DK/Ref	2.50%	3.30%	3.20%	5.50%	3.10%
Total	100.00%	100.00%	100.00%	100.00%	100.00%

**My health insurance plan offers coverage for most things I need.**

	White/Caucasian	Black/African American	Hispanic/Latino	Other	Total
Strongly agree	56.60%	62.80%	49.10%	49.10%	54.50%
Somewhat agree	29.70%	22.20%	36.20%	30.90%	30.80%
Somewhat disagree	8.90%	6.70%	10.30%	10.90%	9.10%
Strongly disagree	4.10%	6.70%	3.40%	9.10%	4.70%
DK/Ref	0.60%	1.70%	0.90%		0.90%
Total	100.00%	100.00%	100.00%	100.00%	100.00%

**Why do you not have medical insurance? (Can choose more than one answer)**

	White/Caucasian	Black/African American	Hispanic/Latino	Other
It is too expensive.	70.80%	54.20%	33.30%	100.00%
My job does not offer health insurance.	16.70%	16.70%	33.30%	28.60%
I am not eligible for coverage.	8.30%	17.40%	20.00%	57.10%
Signing up was too difficult or confusing.	8.30%		13.30%	
I cannot find a plan that meets my needs		8.30%	3.30%	
I lost my job.	8.70%	8.30%	16.70%	
I do not need or want medical insurance.			20.00%	
Other	13.00%	12.50%	13.30%	
Don't know/Refusal	20.00%	20.00%		9.50%

**Does your job offer paid leave when you need to go to the doctor?**

	White/Caucasian	Black/African American	Hispanic/Latino	Other	Total
Yes	33.90%	43.10%	37.30%	38.70%	37.40%
No	24.30%	27.50%	35.40%	30.60%	29.60%
Not currently employed	40.90%	27.50%	25.40%	30.60%	31.50%
DK/Ref	0.90%	2.00%	1.90%		1.40%
Total	100.00%	100.00%	100.00%	100.00%	100.00%

**My job allows me to take time off to go to a doctor's appointment easily.**

	White/Caucasian	Black/African American	Hispanic/Latino	Other	Total
Strongly agree	60.90%	62.00%	56.40%	44.40%	58.20%
Somewhat agree	29.70%	26.70%	24.80%	26.70%	26.80%
Somewhat disagree	5.00%	6.00%	12.80%	20.00%	9.40%
Strongly disagree	4.50%	4.70%	6.00%	8.90%	5.40%
DK/Ref		0.70%			0.10%
Total	100.00%	100.00%	100.00%	100.00%	100.00%

**I can afford to go to the doctor whenever I need to go.**

	White/Caucasian	Black/African American	Hispanic/Latino	Other	Total
Strongly agree	51.50%	62.30%	49.90%	49.20%	52.90%
Somewhat agree	30.90%	22.50%	27.30%	23.80%	27.30%
Somewhat disagree	9.70%	6.90%	14.10%	15.90%	11.20%
Strongly disagree	7.40%	7.80%	8.80%	11.10%	8.20%
DK/Ref	0.60%	0.50%			0.30%
Total	100.00%	100.00%	100.00%	100.00%	100.00%

**I can easily find childcare to go to the doctor (skip if not applicable).**

	White/Caucasian	Black/African American	Hispanic/Latino	Other	Total
Strongly agree	21.80%	28.30%	22.00%	19.70%	23.10%
Somewhat agree	11.80%	8.30%	15.60%	4.90%	12.10%
Somewhat disagree	4.70%	6.80%	6.10%		5.40%
Strongly disagree	7.10%	9.30%	7.70%	16.40%	8.30%
DK/Ref/Not Applicable	54.70%	47.30%	48.70%	59.00%	51.10%
Total	100.00%	100.00%	100.00%	100.00%	100.00%

**In the past 5 years, have you or someone in your household been told that you do not qualify for any kind of government assistance?**

	White/Caucasian	Black/African American	Hispanic/Latino	Other	Total
Yes	23.50%	36.60%	29.10%	25.40%	28.50%
No	37.50%	39.00%	42.30%	33.30%	39.40%
I haven't applied for government assistance in the past 5 years	38.70%	22.90%	25.70%	41.30%	30.60%
Other:		1.00%	1.10%		0.60%
DK/Ref	0.30%	0.50%	1.90%		0.90%
Total	100.00%	100.00%	100.00%	100.00%	100.00%

**The types of doctors I need are close by where I live.**

	White/Caucasian	Black/African American	Hispanic/Latino	Other	Total
Strongly agree	54.10%	60.00%	53.40%	56.50%	55.20%
Somewhat agree	30.40%	25.40%	33.90%	22.60%	30.20%
Somewhat disagree	7.60%	6.80%	9.00%	17.70%	8.60%
Strongly disagree	7.00%	7.30%	2.90%	3.20%	5.30%
DK/Ref	0.90%	0.50%	0.80%		0.70%
Total	100.00%	100.00%	100.00%	100.00%	100.00%

**The doctors nearby have a good reputation in my community.**

	White/Caucasian	Black/African American	Hispanic/Latino	Other	Total
Strongly agree	52.80%	49.00%	57.30%	46.90%	53.30%
Somewhat agree	37.00%	32.80%	31.90%	26.60%	33.50%
Somewhat disagree	3.80%	7.40%	5.30%	25.00%	6.50%
Strongly disagree	1.80%	2.00%	1.80%		1.70%
DK/Ref	4.70%	8.80%	3.70%	1.60%	5.00%
Total	100.00%	100.00%	100.00%	100.00%	100.00%

**I do not trust doctors.**

	White/Caucasian	Black/African American	Hispanic/Latino	Other	Total
Strongly agree	9.70%	7.80%	9.00%	8.10%	8.90%
Somewhat agree	14.40%	19.10%	18.30%	17.70%	17.10%
Somewhat disagree	27.60%	24.50%	24.10%	22.60%	25.30%
Strongly disagree	48.10%	47.10%	47.60%	51.60%	47.90%
DK/Ref	0.30%	1.50%	1.10%		0.80%
Total	100.00%	100.00%	100.00%	100.00%	100.00%

**I have experienced discrimination in the healthcare setting.**

	White/Caucasian	Black/African American	Hispanic/Latino	Other	Total
Strongly agree	10.60%	17.10%	10.30%	8.10%	11.70%
Somewhat agree	14.10%	18.00%	12.40%	17.70%	14.50%
Somewhat disagree	14.70%	18.00%	15.10%	19.40%	15.80%
Strongly disagree	59.80%	45.40%	60.80%	54.80%	56.90%
DK/Ref	0.90%	1.50%	1.30%		1.10%
Total	100.00%	100.00%	100.00%	100.00%	100.00%

**If I am not happy with a doctor, I would find a new one.**

	White/Caucasian	Black/African American	Hispanic/Latino	Other	Total
Strongly agree	73.80%	76.60%	65.30%	72.60%	71.10%
Somewhat agree	16.80%	13.70%	24.10%	8.10%	18.40%
Somewhat disagree	5.30%	6.80%	5.60%	6.50%	5.80%
Strongly disagree	3.50%	2.00%	4.50%	11.30%	4.10%
DK/Ref	0.60%	1.00%	0.50%	1.60%	0.70%
Total	100.00%	100.00%	100.00%	100.00%	100.00%



**If I am not happy with a doctor, I would inform the insurance company.**

	White/Caucasian	Black/African American	Hispanic/Latino	Other	Total
Strongly agree	27.60%	49.30%	33.10%	29.00%	34.30%
Somewhat agree	28.70%	21.00%	25.90%	16.10%	25.30%
Somewhat disagree	23.50%	11.70%	23.50%	19.40%	20.80%
Strongly disagree	17.00%	15.10%	17.20%	33.90%	17.70%
DK/Ref	3.20%	2.90%	0.30%	1.60%	1.90%
Total	100.00%	100.00%	100.00%	100.00%	100.00%

**When a doctor says something that I do not understand, I ask questions for clarity.**

	White/Caucasian	Black/African American	Hispanic/Latino	Other	Total
Strongly agree	76.80%	84.40%	79.60%	66.70%	78.80%
Somewhat agree	18.50%	10.20%	17.20%	12.70%	15.90%
Somewhat disagree	3.20%	3.90%	2.90%	12.70%	3.90%
Strongly disagree	0.60%	0.50%	0.30%	7.90%	0.90%
DK/Ref	0.90%	1.00%			0.50%
Total	100.00%	100.00%	100.00%	100.00%	100.00%

**When a doctor recommends a course of treatment that I disagree with, I tell them.**

	White/Caucasian	Black/African American	Hispanic/Latino	Other	Total
Strongly agree	55.60%	66.30%	57.40%	65.10%	59.10%
Somewhat agree	32.10%	23.40%	29.10%	17.50%	28.20%
Somewhat disagree	7.40%	4.90%	9.80%	7.90%	7.80%
Strongly disagree	2.90%	4.40%	2.60%	7.90%	3.40%
DK/Ref	2.10%	1.00%	1.10%	1.60%	1.40%
Total	100.00%	100.00%	100.00%	100.00%	100.00%

**I have to travel to too many different places for my medical care.**

	White/Caucasian	Black/African American	Hispanic/Latino	Other	Total
Strongly agree	14.10%	16.20%	12.70%	25.40%	14.70%
Somewhat agree	20.50%	17.60%	23.50%	3.20%	20.00%
Somewhat disagree	26.40%	22.50%	20.30%	23.80%	23.10%
Strongly disagree	37.20%	42.20%	42.00%	47.60%	40.70%
DK/Ref	1.80%	1.50%	1.60%		1.50%
Total	100.00%	100.00%	100.00%	100.00%	100.00%

## Survey Results by Household Income Group

**I have clean, clear, and safe drinking water where I live.**

	\$55,000 or over	Under \$55,000	Total
Strongly agree	62.70%	55.70%	59.80%
Somewhat agree	27.00%	29.10%	27.90%
Somewhat disagree	5.10%	10.90%	7.60%
Strongly disagree	3.40%	3.50%	3.40%
DK/Ref	1.80%	0.80%	1.40%
Total	100.00%	100.00%	100.00%

**The place where I live is free from pest infestation.**

	\$55,000 or over	Under \$55,000	Total
Strongly agree	50.70%	41.30%	46.70%
Somewhat agree	34.30%	31.20%	33.00%
Somewhat disagree	10.10%	17.10%	13.00%
Strongly disagree	3.90%	10.10%	6.60%
DK/Ref	1.00%	0.30%	0.70%
Total	100.00%	100.00%	100.00%

**I live in a place that is free from harmful contaminants.**

	\$55,000 or over	Under \$55,000	Total
Strongly agree	55.60%	48.50%	52.60%
Somewhat agree	29.20%	30.90%	29.90%
Somewhat disagree	11.20%	15.50%	13.00%
Strongly disagree	2.20%	3.50%	2.70%
DK/Ref	1.80%	1.60%	1.70%
Total	100.00%	100.00%	100.00%

**I live in a neighborhood where there is a lot of crime.**

	\$55,000 or over	Under \$55,000	Total
Strongly agree	9.10%	15.70%	11.90%
Somewhat agree	14.60%	17.10%	15.60%
Somewhat disagree	28.20%	24.30%	26.50%
Strongly disagree	46.90%	41.60%	44.70%
DK/Ref	1.20%	1.30%	1.20%
Total	100.00%	100.00%	100.00%

**I feel safe in my home.**

	\$55,000 or over	Under \$55,000	Total
Strongly agree	74.00%	63.00%	69.30%
Somewhat agree	22.90%	27.40%	24.80%
Somewhat disagree	2.00%	5.90%	3.60%
Strongly disagree	1.00%	2.40%	1.60%
DK/Ref	0.20%	1.30%	0.70%
Total	100.00%	100.00%	100.00%

**The sidewalks in my neighborhood are safe for walking.**

	\$55,000 or over	Under \$55,000	Total
Strongly agree	59.60%	48.90%	55.10%
Somewhat agree	24.70%	35.00%	29.10%
Somewhat disagree	4.30%	7.50%	5.70%
Strongly disagree	5.50%	7.00%	6.10%
DK/Ref	5.90%	1.60%	4.10%
Total	100.00%	100.00%	100.00%

**I have my own stable housing.**

	\$55,000 or over	Under \$55,000	Total
Strongly agree	80.60%	55.10%	69.80%
Somewhat agree	12.10%	23.00%	16.70%
Somewhat disagree	4.70%	8.60%	6.40%
Strongly disagree	2.00%	13.10%	6.70%
DK/Ref	0.60%	0.30%	0.50%
Total	100.00%	100.00%	100.00%

**I can afford healthy food.**

	\$55,000 or over	Under \$55,000	Total
Strongly agree	67.30%	40.60%	56.00%
Somewhat agree	27.40%	35.80%	31.00%
Somewhat disagree	3.70%	14.70%	8.40%
Strongly disagree	1.20%	8.30%	4.20%
DK/Ref	0.40%	0.50%	0.50%
Total	100.00%	100.00%	100.00%

**There are many organizations in my community that help support people in need.**

	\$55,000 or over	Under \$55,000	Total
Strongly agree	33.00%	29.90%	31.70%
Somewhat agree	41.10%	38.90%	40.20%
Somewhat disagree	12.60%	21.90%	16.60%
Strongly disagree	3.20%	6.90%	4.80%
DK/Ref	10.10%	2.40%	6.80%
Total	100.00%	100.00%	100.00%

**I know how to access resources in my community for my health.**

	\$55,000 or over	Under \$55,000	Total
Strongly agree	54.10%	37.30%	46.90%
Somewhat agree	32.50%	40.00%	35.70%
Somewhat disagree	7.70%	14.90%	10.80%
Strongly disagree	4.20%	7.20%	5.50%
DK/Ref	1.60%	0.50%	1.10%
Total	100.00%	100.00%	100.00%

**I have people locally who support me in trying to be my healthiest self.**

	\$55,000 or over	Under \$55,000	Total
Strongly agree	52.20%	38.20%	46.30%
Somewhat agree	31.40%	28.90%	30.30%
Somewhat disagree	9.30%	21.70%	14.50%
Strongly disagree	5.50%	10.70%	7.70%
DK/Ref	1.60%	0.50%	1.10%
Total	100.00%	100.00%	100.00%

**When voting, I consider how candidates will make decisions about healthcare.**

	\$55,000 or over	Under \$55,000	Total
Strongly agree	57.30%	50.70%	54.50%
Somewhat agree	31.20%	35.70%	33.10%
Somewhat disagree	5.90%	6.40%	6.10%
Strongly disagree	3.40%	4.00%	3.60%
Can't/Doesn't Vote	1.60%	2.40%	1.90%
DK/Ref	0.60%	0.80%	0.70%
Total	100.00%	100.00%	100.00%

**When it comes to information about health, where do you get most of your information?**

	\$55,000 or over	Under \$55,000	Total
Doctors	46.20%	36.10%	41.90%
Television	2.40%	9.10%	5.20%
Newspapers	2.40%	1.30%	1.90%
The internet	32.30%	32.40%	32.30%
Social media	7.30%	6.70%	7.00%
Friends & Family	4.50%	8.60%	6.20%
Nonprofit Organizations	1.20%	1.30%	1.20%
Politicians		0.30%	0.10%
Something else:	3.40%	3.50%	3.40%
DK/Ref	0.40%	0.80%	0.60%
Total	100.00%	100.00%	100.00%

**Would you say that, in general, your health is...**

	\$55,000 or over	Under \$55,000	Total
Excellent	19.70%	13.10%	16.90%
Very good	43.00%	29.30%	37.20%
Good	26.60%	30.40%	28.20%
Fair	9.10%	20.30%	13.80%
Poor	1.40%	6.40%	3.50%
DK/Ref	0.20%	0.50%	0.30%
Total	100.00%	100.00%	100.00%

**My doctor respects me.**

	\$55,000 or over	Under \$55,000	Total
Strongly agree	73.20%	65.60%	70.00%
Somewhat agree	21.70%	27.70%	24.30%
Somewhat disagree	1.60%	3.70%	2.50%
Strongly disagree	2.00%	1.30%	1.70%
DK/Ref	1.60%	1.60%	1.60%
Total	100.00%	100.00%	100.00%

**My doctor takes the time to listen to my concerns.**

	\$55,000 or over	Under \$55,000	Total
Strongly agree	66.80%	60.20%	64.00%
Somewhat agree	25.30%	28.30%	26.60%
Somewhat disagree	4.70%	7.20%	5.80%
Strongly disagree	1.20%	2.10%	1.60%
DK/Ref	2.00%	2.10%	2.00%
Total	100.00%	100.00%	100.00%

**My doctor understands my culture and language.**

	\$55,000 or over	Under \$55,000	Total
Strongly agree	70.40%	64.60%	67.90%
Somewhat agree	20.80%	27.10%	23.50%
Somewhat disagree	4.70%	4.00%	4.40%
Strongly disagree	2.00%	1.90%	1.90%
DK/Ref	2.20%	2.40%	2.30%
Total	100.00%	100.00%	100.00%

**I have a hard time getting an appointment to see my doctor.**

	\$55,000 or over	Under \$55,000	Total
Strongly agree	17.90%	16.40%	17.30%
Somewhat agree	22.30%	20.40%	21.50%
Somewhat disagree	24.30%	27.90%	25.80%
Strongly disagree	33.90%	32.70%	33.40%
DK/Ref	1.60%	2.70%	2.00%
Total	100.00%	100.00%	100.00%

**Do you have medical insurance?**

	\$55,000 or over	Under \$55,000	Total
Yes	96.40%	85.10%	91.60%
No	3.60%	14.70%	8.30%
DK/Ref		0.30%	0.10%
Total	100.00%	100.00%	100.00%

### What kind of medical insurance do you have?

	\$55,000 or over	Under \$55,000
Insurance through your employer (or parent/guardian employer)	61.30%	18.10%
Self-purchased insurance (or parent/guardian-purchased)	15.10%	18.80%
Medicare (including Medicare supplemental providers)	19.00%	36.90%
Medicaid (or fully subsidized plans through healthcare.gov)	10.20%	33.10%
Something else:	4.70%	4.40%
Don't know/Refusal	0.80%	1.60%

### It is easy for me to enroll in health insurance.

	\$55,000 or over	Under \$55,000	Total
Strongly agree	58.60%	48.60%	54.60%
Somewhat agree	29.30%	33.50%	31.00%
Somewhat disagree	5.10%	11.00%	7.40%
Strongly disagree	3.10%	6.00%	4.20%
DK/Ref	3.90%	0.90%	2.70%
Total	100.00%	100.00%	100.00%

### It is easy for me to understand all the benefits that are part of my health insurance plan.

	\$55,000 or over	Under \$55,000	Total
Strongly agree	38.20%	39.60%	38.80%
Somewhat agree	41.30%	39.00%	40.40%
Somewhat disagree	11.00%	16.40%	13.10%
Strongly disagree	9.00%	4.70%	7.30%
DK/Ref	0.40%	0.30%	0.40%
Total	100.00%	100.00%	100.00%

### My health insurance plan offers coverage for most things I need.

	\$55,000 or over	Under \$55,000	Total
Strongly agree	57.50%	45.90%	52.90%
Somewhat agree	29.20%	36.60%	32.10%
Somewhat disagree	8.20%	10.60%	9.10%
Strongly disagree	4.30%	5.90%	4.90%
DK/Ref	0.80%	0.90%	0.90%
Total	100.00%	100.00%	100.00%



**Why do you not have medical insurance? (Can choose more than one answer)**

	\$55,000 or over	Under \$55,000
It is too expensive.	66.70%	58.90%
My job does not offer health insurance.	16.70%	26.80%
I am not eligible for coverage.	11.10%	21.40%
Signing up was too difficult or confusing.	5.60%	5.50%
I cannot find a plan that meets my needs.		3.60%
I lost my job.		12.50%
I do not need or want medical insurance.		8.90%
Other:	5.90%	12.50%
Don't know/Refusal		12.50%

**Does your job offer paid leave when you need to go to the doctor?**

	\$55,000 or over	Under \$55,000	Total
Yes	51.40%	19.80%	38.00%
No	25.70%	35.30%	29.80%
Not currently employed (includes stay-at-home parents, retirees, students, etc.)	21.10%	44.10%	30.90%
DK/Ref	1.80%	0.80%	1.40%
Total	100.00%	100.00%	100.00%

**My job allows me to take time off to go to a doctor's appointment easily.**

	\$55,000 or over	Under \$55,000	Total
Strongly agree	61.80%	45.50%	56.20%
Somewhat agree	25.70%	32.20%	27.90%
Somewhat disagree	8.00%	14.70%	10.30%
Strongly disagree	4.50%	7.10%	5.40%
DK/Ref		0.50%	0.20%
Total	100.00%	100.00%	100.00%

**I can afford to go to the doctor whenever I need to go.**

	\$55,000 or over	Under \$55,000	Total
Strongly agree	60.00%	40.50%	51.80%
Somewhat agree	26.80%	28.50%	27.50%
Somewhat disagree	8.30%	16.80%	11.90%
Strongly disagree	4.50%	13.60%	8.40%
DK/Ref	0.40%	0.50%	0.50%
Total	100.00%	100.00%	100.00%

**I can easily find childcare to go to the doctor (skip if not applicable).**

	\$55,000 or over	Under \$55,000	Total
Strongly agree	25.90%	20.30%	23.50%
Somewhat agree	12.50%	12.00%	12.30%
Somewhat disagree	5.50%	6.40%	5.90%
Strongly disagree	6.90%	10.40%	8.40%
DK/Ref/Not Applicable	49.20%	50.90%	49.90%
Total	100.00%	100.00%	100.00%

**In the past 5 years, have you or someone in your household been told that you do not qualify for any kind of government assistance?**

	\$55,000 or over	Under \$55,000	Total
Yes	26.00%	34.00%	29.40%
No	34.70%	43.90%	38.60%
I haven't applied for government assistance in the past 5 years	37.50%	21.70%	30.80%
Other:	0.80%	0.50%	0.70%
DK/Ref	1.00%		0.60%
Total	100.00%	100.00%	100.00%

**The types of doctors I need are close by where I live.**

	\$55,000 or over	Under \$55,000	Total
Strongly agree	59.50%	46.40%	53.90%
Somewhat agree	27.30%	36.80%	31.30%
Somewhat disagree	8.50%	10.70%	9.40%
Strongly disagree	4.00%	5.90%	4.80%
DK/Ref	0.80%	0.30%	0.60%
Total	100.00%	100.00%	100.00%

**The doctors nearby have a good reputation in my community.**

	\$55,000 or over	Under \$55,000	Total
Strongly agree	55.20%	48.80%	52.50%
Somewhat agree	33.70%	37.10%	35.10%
Somewhat disagree	4.30%	10.40%	6.90%
Strongly disagree	1.80%	1.60%	1.70%
DK/Ref	4.90%	2.10%	3.70%
Total	100.00%	100.00%	100.00%

### I do not trust doctors.

	\$55,000 or over	Under \$55,000	Total
Strongly agree	9.10%	8.20%	8.70%
Somewhat agree	13.20%	21.00%	16.60%
Somewhat disagree	26.70%	26.10%	26.40%
Strongly disagree	49.60%	44.10%	47.30%
DK/Ref	1.40%	0.50%	1.00%
Total	100.00%	100.00%	100.00%

### I have experienced discrimination in the healthcare setting.

	\$55,000 or over	Under \$55,000	Total
Strongly agree	12.30%	11.00%	11.70%
Somewhat agree	14.20%	16.60%	15.20%
Somewhat disagree	14.00%	21.10%	17.00%
Strongly disagree	58.50%	50.30%	55.00%
DK/Ref	1.00%	1.10%	1.00%
Total	100.00%	100.00%	100.00%

### If I am not happy with a doctor, I would find a new one.

	\$55,000 or over	Under \$55,000	Total
Strongly agree	74.20%	63.60%	69.70%
Somewhat agree	17.30%	21.40%	19.00%
Somewhat disagree	4.70%	7.50%	5.90%
Strongly disagree	3.10%	6.40%	4.50%
DK/Ref	0.60%	1.10%	0.80%
Total	100.00%	100.00%	100.00%

### If I am not happy with a doctor, I would inform the insurance company.

	\$55,000 or over	Under \$55,000	Total
Strongly agree	30.20%	35.60%	32.50%
Somewhat agree	23.50%	29.90%	26.20%
Somewhat disagree	24.90%	18.70%	22.20%
Strongly disagree	19.70%	14.40%	17.50%
DK/Ref	1.80%	1.30%	1.60%
Total	100.00%	100.00%	100.00%

**When a doctor says something that I do not understand, I ask questions for clarity.**

	\$55,000 or over	Under \$55,000	Total
Strongly agree	79.50%	75.10%	77.60%
Somewhat agree	15.00%	19.00%	16.70%
Somewhat disagree	3.70%	5.10%	4.30%
Strongly disagree	1.60%		0.90%
DK/Ref	0.20%	0.80%	0.50%
Total	100.00%	100.00%	100.00%

**When a doctor recommends a course of treatment that I disagree with, I tell them.**

	\$55,000 or over	Under \$55,000	Total
Strongly agree	60.40%	54.70%	57.90%
Somewhat agree	26.80%	32.00%	29.00%
Somewhat disagree	8.30%	7.70%	8.00%
Strongly disagree	3.40%	4.00%	3.60%
DK/Ref	1.20%	1.60%	1.40%
Total	100.00%	100.00%	100.00%

**I have to travel to too many different places for my medical care.**

	\$55,000 or over	Under \$55,000	Total
Strongly agree	15.20%	14.70%	15.00%
Somewhat agree	20.70%	22.70%	21.50%
Somewhat disagree	18.50%	28.80%	22.90%
Strongly disagree	44.40%	32.30%	39.20%
DK/Ref	1.20%	1.60%	1.40%
Total	100.00%	100.00%	100.00%

## Survey Results by County

**I have clean, clear, and safe drinking water where I live.**

	Alachua	Bradford	Duval	Gadsden	Hillsborough	Leon	Miami - Dade	Orange	Putnam
Strongly agree	69.00%	80.00%	63.10%	62.50%	50.00%	59.30%	63.30%	60.40%	55.60%
Somewhat agree	20.70%	20.00%	25.50%	37.50%	34.70%	29.60%	23.50%	27.10%	22.20%
Somewhat disagree	1.70%		5.00%		9.50%	9.30%	7.30%	8.30%	
Strongly disagree	3.40%		5.00%		5.30%		3.20%	2.60%	22.20%
DK/Ref	5.20%		1.40%		0.50%	1.90%	2.60%	1.60%	
Total	100.00%	100.00%	100.00%	100.00%	100.00%	100.00%	100.00%	100.00%	100.00%

**The place where I live is free from pest infestation.**

	Alachua	Bradford	Duval	Gadsden	Hillsborough	Leon	Miami - Dade	Orange	Putnam
Strongly agree	58.60%	75.00%	54.60%	50.00%	43.90%	49.10%	45.00%	46.40%	50.00%
Somewhat agree	22.40%	25.00%	29.10%	40.00%	35.40%	29.10%	35.90%	28.60%	25.00%
Somewhat disagree	8.60%		7.80%		13.20%	16.40%	11.20%	18.80%	25.00%
Strongly disagree	5.20%		8.50%	10.00%	6.30%	5.50%	6.80%	6.30%	
DK/Ref	5.20%				1.10%		1.20%		
Total	100.00%	100.00%	100.00%	100.00%	100.00%	100.00%	100.00%	100.00%	100.00%

**I live in a place that is free from harmful contaminants.**

	Alachua	Bradford	Duval	Gadsden	Hillsborough	Leon	Miami - Dade	Orange	Putnam
Strongly agree	67.20%	66.70%	57.70%	50.00%	54.00%	63.60%	47.90%	53.40%	50.00%
Somewhat agree	20.70%	33.30%	26.10%	50.00%	30.20%	18.20%	32.40%	28.00%	37.50%
Somewhat disagree	5.20%		9.20%		13.20%	7.30%	15.00%	12.40%	12.50%
Strongly disagree	1.70%		4.20%		1.10%	9.10%	3.50%	2.10%	
DK/Ref	5.20%		2.80%		1.60%	1.80%	1.20%	4.10%	
Total	100.00%	100.00%	100.00%	100.00%	100.00%	100.00%	100.00%	100.00%	100.00%

**I live in a neighborhood where there is a lot of crime.**

	Alachua	Bradford	Duval	Gadsden	Hillsborough	Leon	Miami - Dade	Orange	Putnam
Strongly agree	10.30%	20.00%	12.90%		7.40%	9.10%	15.60%	11.00%	
Somewhat agree	10.30%	20.00%	16.40%	40.00%	16.40%	14.50%	13.50%	16.20%	22.20%
Somewhat disagree	19.00%		23.60%	10.00%	21.70%	30.90%	28.50%	28.30%	11.10%
Strongly disagree	58.60%	60.00%	47.10%	50.00%	52.40%	43.60%	40.30%	44.50%	55.60%
DK/Ref	1.70%				2.10%	1.80%	2.10%		11.10%
Total	100.00%	100.00%	100.00%	100.00%	100.00%	100.00%	100.00%	100.00%	100.00%

**I feel safe in my home.**

	Alachua	Bradford	Duval	Gadsden	Hillsborough	Leon	Miami - Dade	Orange	Putnam
Strongly agree	74.10%	80.00%	71.80%	75.00%	74.50%	72.20%	69.30%	64.80%	77.80%
Somewhat agree	24.10%	20.00%	20.40%	25.00%	21.30%	24.10%	26.90%	25.90%	11.10%
Somewhat disagree			3.50%		3.20%	1.90%	1.50%	7.30%	11.10%
Strongly disagree	1.70%		3.50%		0.50%	1.90%	1.80%	1.00%	
DK/Ref			0.70%		0.50%		0.60%	1.00%	
Total	100.00%	100.00%	100.00%	100.00%	100.00%	100.00%	100.00%	100.00%	100.00%

**The sidewalks in my neighborhood are safe for walking.**

	Alachua	Bradford	Duval	Gadsden	Hillsborough	Leon	Miami - Dade	Orange	Putnam
Strongly agree	41.40%	20.00%	59.90%	25.00%	50.80%	38.90%	55.60%	66.30%	37.50%
Somewhat agree	25.90%		20.40%	37.50%	30.70%	25.90%	35.00%	18.10%	12.50%
Somewhat disagree	3.40%	40.00%	4.90%		7.90%	5.60%	4.10%	5.70%	12.50%
Strongly disagree	10.30%	20.00%	10.60%		6.90%	11.10%	3.20%	7.30%	12.50%
DK/Ref	19.00%	20.00%	4.20%	37.50%	3.70%	18.50%	2.10%	2.60%	25.00%
Total	100.00%	100.00%	100.00%	100.00%	100.00%	100.00%	100.00%	100.00%	100.00%

### I have my own stable housing.

	Alachua	Bradford	Duval	Gadsden	Hillsborough	Leon	Miami - Dade	Orange	Putnam
Strongly agree	79.30%	80.00%	75.70%	60.00%	73.70%	75.90%	66.00%	69.80%	77.80%
Somewhat agree	8.60%		13.60%	30.00%	15.80%	18.50%	17.60%	18.20%	
Somewhat disagree	1.70%	20.00%	3.60%	10.00%	4.70%	3.70%	7.90%	7.30%	
Strongly disagree	6.90%		6.40%		4.70%	1.90%	8.50%	4.70%	22.20%
DK/Ref	3.40%		0.70%		1.10%				
Total	100.00%	100.00%	100.00%	100.00%	100.00%	100.00%	100.00%	100.00%	100.00%

### I can afford healthy food.

	Alachua	Bradford	Duval	Gadsden	Hillsborough	Leon	Miami - Dade	Orange	Putnam
Strongly agree	69.00%	80.00%	65.20%	50.00%	55.00%	54.50%	52.60%	57.00%	75.00%
Somewhat agree	19.00%	20.00%	20.60%	37.50%	31.70%	34.50%	35.90%	26.90%	12.50%
Somewhat disagree	5.20%		8.50%	12.50%	9.50%	3.60%	8.50%	8.80%	
Strongly disagree	6.90%		3.50%		3.70%	3.60%	2.90%	6.20%	12.50%
DK/Ref			2.10%			3.60%		1.00%	
Total	100.00%	100.00%	100.00%	100.00%	100.00%	100.00%	100.00%	100.00%	100.00%

### There are many organizations in my community that help support people in need.

	Alachua	Bradford	Duval	Gadsden	Hillsborough	Leon	Miami - Dade	Orange	Putnam
Strongly agree	41.40%	50.00%	37.60%	22.20%	32.10%	36.40%	31.20%	27.70%	22.20%
Somewhat agree	34.50%	25.00%	34.80%	44.40%	38.40%	36.40%	38.20%	43.50%	33.30%
Somewhat disagree	5.20%	25.00%	8.50%	11.10%	14.70%	3.60%	22.90%	13.60%	22.20%
Strongly disagree	6.90%		8.50%		3.70%	7.30%	3.50%	6.80%	11.10%
DK/Ref	12.10%		10.60%	22.20%	11.10%	16.40%	4.10%	8.40%	11.10%
Total	100.00%	100.00%	100.00%	100.00%	100.00%	100.00%	100.00%	100.00%	100.00%

**I know how to access resources in my community for my health.**

	Alachua	Bradford	Duval	Gadsden	Hillsborough	Leon	Miami - Dade	Orange	Putnam
Strongly agree	60.30%	80.00%	56.70%	55.60%	43.90%	54.50%	45.70%	44.00%	33.30%
Somewhat agree	19.00%	20.00%	24.80%	22.20%	38.10%	25.50%	40.50%	32.60%	33.30%
Somewhat disagree	5.20%		10.60%	22.20%	12.70%	9.10%	8.80%	13.00%	11.10%
Strongly disagree	12.10%		7.10%		3.70%	5.50%	4.40%	6.70%	22.20%
DK/Ref	3.40%		0.70%		1.60%	5.50%	0.60%	3.60%	
Total	100.00%	100.00%	100.00%	100.00%	100.00%	100.00%	100.00%	100.00%	100.00%

**I have people locally who support me in trying to be my healthiest self.**

	Alachua	Bradford	Duval	Gadsden	Hillsborough	Leon	Miami - Dade	Orange	Putnam
Strongly agree	62.10%	60.00%	52.50%	50.00%	46.00%	49.10%	45.00%	43.50%	50.00%
Somewhat agree	17.20%	40.00%	26.20%	20.00%	28.00%	29.10%	32.10%	33.20%	25.00%
Somewhat disagree	6.90%		10.60%	20.00%	17.50%	9.10%	15.30%	13.50%	
Strongly disagree	8.60%		9.20%	10.00%	6.90%	9.10%	7.40%	8.30%	12.50%
DK/Ref	5.20%		1.40%		1.60%	3.60%	0.30%	1.60%	12.50%
Total	100.00%	100.00%	100.00%	100.00%	100.00%	100.00%	100.00%	100.00%	100.00%

**When voting, I consider how candidates will make decisions about healthcare.**

	Alachua	Bradford	Duval	Gadsden	Hillsborough	Leon	Miami - Dade	Orange	Putnam
Doctors	50.80%	50.00%	51.80%	44.40%	46.60%	44.40%	36.00%	41.80%	50.00%
Television	1.70%		4.30%		4.20%	3.70%	7.10%	5.70%	
Newspapers			0.70%	11.10%	1.10%		3.50%	0.50%	
The internet	25.40%	50.00%	24.80%	22.20%	34.40%	27.80%	31.90%	36.60%	25.00%
Social media	3.40%		4.30%	11.10%	3.20%	3.70%	10.90%	5.70%	12.50%
Friends & Family	3.40%		7.80%	11.10%	2.60%	11.10%	7.70%	5.20%	12.50%
Nonprofit Organizations	1.70%		0.70%		2.60%	1.90%	0.30%	1.50%	
Politicians			0.70%						
Something else:	11.90%		3.50%		4.20%	5.60%	2.10%	2.10%	
DK/Ref	1.70%		1.40%		1.10%	1.90%	0.60%	1.00%	
Total	100.00%	100.00%	100.00%	100.00%	100.00%	100.00%	100.00%	100.00%	100.00%



### Would you say that, in general, your health is...

	Alachua	Bradford	Duval	Gadsden	Hillsborough	Leon	Miami - Dade	Orange	Putnam
Excellent	20.70%	20.00%	14.90%	12.50%	12.70%	10.90%	20.20%	16.10%	12.50%
Very good	31.00%	60.00%	39.00%	25.00%	38.10%	29.10%	36.10%	38.50%	37.50%
Good	27.60%	20.00%	27.00%	50.00%	25.90%	40.00%	30.50%	25.50%	25.00%
Fair	13.80%		15.60%	12.50%	18.00%	12.70%	10.90%	16.10%	25.00%
Poor	6.90%		3.50%		4.80%	7.30%	1.80%	3.60%	
DK/Ref					0.50%		0.60%		
Total	100.00%	100.00%	100.00%	100.00%	100.00%	100.00%	100.00%	100.00%	100.00%

### My doctor respects me.

	Alachua	Bradford	Duval	Gadsden	Hillsborough	Leon	Miami - Dade	Orange	Putnam
Strongly agree	76.30%	66.70%	71.60%	55.60%	68.80%	61.80%	73.80%	67.40%	75.00%
Somewhat agree	16.90%	33.30%	22.00%	33.30%	22.80%	25.50%	22.40%	25.40%	25.00%
Somewhat disagree			1.40%	11.10%	3.20%	7.30%	2.40%	1.60%	
Strongly disagree	1.70%		0.70%		2.10%	1.80%	1.20%	3.10%	
DK/Ref	5.10%		4.30%		3.20%	3.60%	0.30%	2.60%	
Total	100.00%	100.00%	100.00%	100.00%	100.00%	100.00%	100.00%	100.00%	100.00%

### My doctor takes the time to listen to my concerns.

	Alachua	Bradford	Duval	Gadsden	Hillsborough	Leon	Miami - Dade	Orange	Putnam
Strongly agree	79.30%	60.00%	71.60%	66.70%	61.40%	63.00%	66.30%	59.40%	66.70%
Somewhat agree	12.10%	40.00%	21.30%	33.30%	28.60%	22.20%	24.90%	28.60%	11.10%
Somewhat disagree	1.70%		2.10%		5.30%	5.60%	7.60%	5.20%	11.10%
Strongly disagree	1.70%		1.40%		0.50%	5.60%	0.30%	3.10%	11.10%
DK/Ref	5.20%		3.50%		4.20%	3.70%	0.90%	3.60%	
Total	100.00%	100.00%	100.00%	100.00%	100.00%	100.00%	100.00%	100.00%	100.00%

**My doctor understands my culture and language.**

	Alachua	Bradford	Duval	Gadsden	Hillsborough	Leon	Miami - Dade	Orange	Putnam
Strongly agree	81.00%	100.00%	73.80%	50.00%	62.40%	70.90%	69.70%	64.80%	66.70%
Somewhat agree	10.30%		15.60%	40.00%	23.30%	16.40%	24.40%	27.50%	22.20%
Somewhat disagree	1.70%		6.40%		4.20%	5.50%	5.00%	2.10%	
Strongly disagree			0.70%		5.30%	1.80%		2.60%	11.10%
DK/Ref	6.90%		3.50%	10.00%	4.80%	5.50%	0.90%	3.10%	
Total	100.00%	100.00%	100.00%	100.00%	100.00%	100.00%	100.00%	100.00%	100.00%

**I have a hard time getting an appointment to see my doctor.**

	Alachua	Bradford	Duval	Gadsden	Hillsborough	Leon	Miami - Dade	Orange	Putnam
Strongly agree	16.90%		16.30%		12.20%	13.00%	18.80%	18.20%	
Somewhat agree	13.60%		16.30%	37.50%	21.20%	16.70%	22.60%	20.80%	12.50%
Somewhat disagree	20.30%	20.00%	18.40%	12.50%	21.70%	16.70%	28.50%	27.60%	25.00%
Strongly disagree	44.10%	80.00%	44.00%	50.00%	41.30%	50.00%	28.80%	30.20%	62.50%
DK/Ref	5.10%		5.00%		3.70%	3.70%	1.20%	3.10%	
Total	100.00%	100.00%	100.00%	100.00%	100.00%	100.00%	100.00%	100.00%	100.00%

**Do you have medical insurance?**

	Alachua	Bradford	Duval	Gadsden	Hillsborough	Leon	Miami - Dade	Orange	Putnam
Yes	96.60%	100.00%	91.40%	88.90%	89.40%	92.70%	91.50%	92.20%	88.90%
No	3.40%		7.10%	11.10%	10.10%	7.30%	8.50%	7.80%	11.10%
DK/Ref			1.40%		0.50%				
Total	100.00%	100.00%	100.00%	100.00%	100.00%	100.00%	100.00%	100.00%	100.00%

### What kind of medical insurance do you have?

	Alachua	Bradford	Duval	Gadsden	Hillsborough	Leon	Miami - Dade	Orange	Putnam
Insurance through your employer	45.60%	40.00%	44.30%	37.50%	47.10%	43.10%	37.20%	52.00%	28.60%
Self-purchased insurance	22.80%		13.80%	12.50%	11.20%	21.60%	21.50%	13.60%	
Medicare	28.60%	40.00%	27.70%	37.50%	28.20%	29.40%	25.70%	22.50%	37.50%
Medicaid	12.30%	16.70%	19.20%	12.50%	13.50%	17.60%	22.80%	15.80%	25.00%
Something else	3.50%	40.00%	6.90%		5.30%	3.90%	3.80%	6.20%	12.50%
Don't know/ Refusal	1.80%		1.60%	14.30%	1.80%		1.60%	0.60%	

### It is easy for me to enroll in health insurance.

	Alachua	Bradford	Duval	Gadsden	Hillsborough	Leon	Miami - Dade	Orange	Putnam
Strongly agree	51.80%	66.70%	64.10%	62.50%	58.60%	51.00%	51.00%	52.50%	37.50%
Somewhat agree	26.80%		24.20%	25.00%	23.70%	27.50%	36.50%	32.20%	25.00%
Somewhat disagree	7.10%	16.70%	4.70%		10.10%	3.90%	5.40%	9.60%	12.50%
Strongly disagree	8.90%	16.70%	2.30%	12.50%	3.00%	9.80%	4.20%	5.10%	25.00%
DK/Ref	5.40%		4.70%		4.70%	7.80%	2.90%	0.60%	
Total	100.00%	100.00%	100.00%	100.00%	100.00%	100.00%	100.00%	100.00%	100.00%

### It is easy for me to understand all the benefits that are part of my health insurance plan.

	Alachua	Bradford	Duval	Gadsden	Hillsborough	Leon	Miami - Dade	Orange	Putnam
Strongly agree	46.40%	40.00%	53.10%	50.00%	36.70%	35.30%	37.70%	35.60%	62.50%
Somewhat agree	32.10%	40.00%	32.80%	25.00%	38.50%	31.40%	43.10%	40.10%	25.00%
Somewhat disagree	14.30%		7.80%	12.50%	12.40%	21.60%	14.10%	15.30%	12.50%
Strongly disagree	7.10%	20.00%	5.50%	12.50%	11.20%	9.80%	5.10%	7.90%	
DK/Ref			0.80%		1.20%	2.00%		1.10%	
Total	100.00%	100.00%	100.00%	100.00%	100.00%	100.00%	100.00%	100.00%	100.00%

**My health insurance plan offers coverage for most things I need.**

	Alachua	Bradford	Duval	Gadsden	Hillsborough	Leon	Miami - Dade	Orange	Putnam
Strongly agree	64.30%	80.00%	64.10%	71.40%	57.10%	58.80%	50.00%	47.80%	37.50%
Somewhat agree	23.20%		25.80%	28.60%	30.00%	23.50%	33.30%	34.30%	37.50%
Somewhat disagree	3.60%		7.00%		7.60%	9.80%	12.50%	8.40%	12.50%
Strongly disagree	7.10%	20.00%	0.80%		4.10%	7.80%	4.20%	8.40%	
DK/Ref	1.80%		2.30%		1.20%			1.10%	12.50%
Total	100.00%	100.00%	100.00%	100.00%	100.00%	100.00%	100.00%	100.00%	100.00%

**Why do you not have medical insurance?**

	Alachua	Bradford	Duval	Gadsden	Hillsborough	Leon	Miami - Dade	Orange	Putnam
It is too expensive.	50.00%		53.80%	100.00%	40.00%	50.00%	65.50%	46.70%	100.00%
My job does not offer health insurance.			7.70%		5.00%		31.00%	46.70%	
I am not eligible for coverage.					40.00%		13.80%	26.70%	
Signing up was too difficult or confusing.			15.40%		10.00%		3.60%	6.70%	
I cannot find a plan that meets my needs.							3.40%	13.30%	
I lost my job.			7.70%		10.00%	25.00%	13.80%	13.30%	
I do not need or want medical insurance.					10.00%		10.30%	6.70%	
Other:	50.00%		15.40%		5.00%		13.80%	13.30%	
Don't know/ Refusal			25.00%			50.00%			

\*Column totals are greater than 100% due to "select all that apply"

### Does your job offer paid leave when you need to go to the doctor?

	Alachua	Bradford	Duval	Gadsden	Hillsborough	Leon	Miami - Dade	Orange	Putnam
Yes	42.40%	40.00%	41.80%	50.00%	33.90%	35.20%	35.80%	41.10%	44.40%
No	25.40%	20.00%	27.00%	12.50%	29.60%	29.60%	32.80%	28.60%	
Not currently employed	30.50%	40.00%	29.80%	37.50%	36.00%	35.20%	29.30%	28.60%	55.60%
DK/Ref	1.70%		1.40%		0.50%		2.10%	1.60%	
Total	100.00%	100.00%	100.00%	100.00%	100.00%	100.00%	100.00%	100.00%	100.00%

### My job allows me to take time off to go to a doctor's appointment easily.

	Alachua	Bradford	Duval	Gadsden	Hillsborough	Leon	Miami - Dade	Orange	Putnam
Strongly agree	70.00%	75.00%	65.70%	33.30%	52.90%	68.60%	57.10%	54.00%	66.70%
Somewhat agree	22.50%		23.20%	50.00%	28.90%	22.90%	26.70%	30.90%	
Somewhat disagree	2.50%		6.10%	16.70%	9.10%	8.60%	12.50%	9.40%	
Strongly disagree	5.00%	25.00%	4.00%		9.10%		3.80%	5.00%	33.30%
DK/Ref			1.00%					0.70%	
Total	100.00%	100.00%	100.00%	100.00%	100.00%	100.00%	100.00%	100.00%	100.00%

### I can afford to go to the doctor whenever I need to go.

	Alachua	Bradford	Duval	Gadsden	Hillsborough	Leon	Miami - Dade	Orange	Putnam
Strongly agree	62.10%	83.30%	63.10%	62.50%	55.00%	54.50%	49.70%	45.80%	44.40%
Somewhat agree	19.00%	16.70%	20.60%	37.50%	29.10%	25.50%	27.60%	31.80%	44.40%
Somewhat disagree	8.60%		7.80%		8.50%	10.90%	14.40%	11.50%	11.10%
Strongly disagree	10.30%		7.10%		7.40%	9.10%	8.20%	9.90%	
DK/Ref			1.40%					1.00%	
Total	100.00%	100.00%	100.00%	100.00%	100.00%	100.00%	100.00%	100.00%	100.00%

**I can easily find childcare to go to the doctor (skip if not applicable).**

	Alachua	Bradford	Duval	Gadsden	Hillsborough	Leon	Miami - Dade	Orange	Putnam
Strongly agree	23.30%	20.00%	24.10%	12.50%	16.90%	12.70%	28.50%	21.80%	11.10%
Somewhat agree	10.00%	20.00%	9.90%	12.50%	13.80%	12.70%	11.20%	14.00%	11.10%
Somewhat disagree	3.30%		4.30%	12.50%	6.30%	3.60%	5.00%	6.20%	11.10%
Strongly disagree	5.00%		7.10%		12.20%	7.30%	8.50%	6.70%	11.10%
DK/Ref	58.30%	60.00%	54.60%	62.50%	50.80%	63.60%	46.80%	51.30%	55.60%
Total	100.00%	100.00%	100.00%	100.00%	100.00%	100.00%	100.00%	100.00%	100.00%

**In the past 5 years, have you or someone in your household been told that you do not qualify for any kind of government assistance?**

	Alachua	Bradford	Duval	Gadsden	Hillsborough	Leon	Miami - Dade	Orange	Putnam
Yes	25.40%	20.00%	30.70%	33.30%	22.60%	24.10%	31.20%	28.60%	33.30%
No	28.80%	20.00%	38.60%	55.60%	40.50%	37.00%	45.00%	31.30%	33.30%
I haven't applied for government assistance in the past 5 years	45.80%	60.00%	30.70%	11.10%	36.30%	37.00%	20.90%	38.50%	33.30%
Other:							1.20%	1.00%	
DK/Ref					0.50%	1.90%	1.80%	0.50%	
Total	100.00%	100.00%	100.00%	100.00%	100.00%	100.00%	100.00%	100.00%	100.00%

**The types of doctors I need are close by where I live.**

	Alachua	Bradford	Duval	Gadsden	Hillsborough	Leon	Miami - Dade	Orange	Putnam
Strongly agree	66.10%	50.00%	57.00%	22.20%	59.30%	60.00%	51.30%	56.50%	25.00%
Somewhat agree	22.00%	16.70%	26.80%	33.30%	30.20%	25.50%	33.40%	29.50%	12.50%
Somewhat disagree	5.10%		6.30%	11.10%	5.30%	7.30%	11.70%	9.30%	25.00%
Strongly disagree	3.40%	16.70%	7.70%	33.30%	4.80%	5.50%	3.20%	4.70%	37.50%
DK/Ref	3.40%	16.70%	2.10%		0.50%	1.80%	0.30%		
Total	100.00%	100.00%	100.00%	100.00%	100.00%	100.00%	100.00%	100.00%	100.00%

**The doctors nearby have a good reputation in my community.**

	Alachua	Bradford	Duval	Gadsden	Hillsborough	Leon	Miami - Dade	Orange	Putnam
Strongly agree	69.50%	60.00%	53.90%	44.40%	51.90%	50.90%	56.00%	46.90%	22.20%
Somewhat agree	20.30%	20.00%	29.10%	22.20%	34.40%	27.30%	34.30%	39.10%	33.30%
Somewhat disagree	1.70%		5.00%	11.10%	5.30%	7.30%	6.70%	8.30%	22.20%
Strongly disagree	3.40%	20.00%	2.10%		1.10%	1.80%	1.20%	2.10%	11.10%
DK/Ref	5.10%		9.90%	22.20%	7.40%	12.70%	1.80%	3.60%	11.10%
Total	100.00%	100.00%	100.00%	100.00%	100.00%	100.00%	100.00%	100.00%	100.00%

**I do not trust doctors.**

	Alachua	Bradford	Duval	Gadsden	Hillsborough	Leon	Miami - Dade	Orange	Putnam
Strongly agree	17.20%	33.30%	8.60%		8.40%	8.90%	8.80%	6.80%	22.20%
Somewhat agree	10.30%	16.70%	14.30%	25.00%	11.10%	23.20%	19.10%	19.30%	33.30%
Somewhat disagree	20.70%	16.70%	22.10%	12.50%	23.70%	21.40%	28.50%	25.00%	22.20%
Strongly disagree	50.00%	33.30%	52.90%	62.50%	54.20%	46.40%	42.40%	49.00%	22.20%
DK/Ref	1.70%		2.10%		2.60%		1.20%		
Total	100.00%	100.00%	100.00%	100.00%	100.00%	100.00%	100.00%	100.00%	100.00%

**I have experienced discrimination in the healthcare setting.**

	Alachua	Bradford	Duval	Gadsden	Hillsborough	Leon	Miami - Dade	Orange	Putnam
Strongly agree	13.80%	33.30%	11.40%	11.10%	9.60%	21.80%	9.70%	12.40%	22.20%
Somewhat agree	12.10%	16.70%	10.70%	22.20%	10.60%	12.70%	16.50%	17.60%	11.10%
Somewhat disagree	12.10%		12.90%	11.10%	16.00%	14.50%	16.80%	18.10%	11.10%
Strongly disagree	62.10%	50.00%	63.60%	55.60%	61.70%	50.90%	56.50%	51.30%	33.30%
DK/Ref			1.40%		2.10%		0.60%	0.50%	22.20%
Total	100.00%	100.00%	100.00%	100.00%	100.00%	100.00%	100.00%	100.00%	100.00%

**If I am not happy with a doctor, I would find a new one.**

	Alachua	Bradford	Duval	Gadsden	Hillsborough	Leon	Miami - Dade	Orange	Putnam
Strongly agree	80.70%	100.00%	76.40%	62.50%	74.10%	75.90%	62.80%	76.00%	87.50%
Somewhat agree	14.00%		14.30%	25.00%	14.30%	16.70%	25.50%	13.50%	12.50%
Somewhat disagree	1.80%		3.60%	12.50%	5.30%	5.60%	5.90%	8.30%	
Strongly disagree			4.30%		5.80%	1.90%	5.00%	2.10%	
DK/Ref	3.50%		1.40%		0.50%		0.90%		
Total	100.00%	100.00%	100.00%	100.00%	100.00%	100.00%	100.00%	100.00%	100.00%

**If I am not happy with a doctor, I would inform the insurance company.**

	Alachua	Bradford	Duval	Gadsden	Hillsborough	Leon	Miami - Dade	Orange	Putnam
Strongly agree	36.80%	60.00%	46.10%	30.00%	30.00%	32.70%	32.40%	33.70%	37.50%
Somewhat agree	22.80%	20.00%	20.60%	20.00%	24.20%	18.20%	29.70%	23.30%	12.50%
Somewhat disagree	12.30%		16.30%	40.00%	20.00%	18.20%	21.80%	24.90%	12.50%
Strongly disagree	22.80%	20.00%	15.60%		24.20%	21.80%	15.00%	17.10%	37.50%
DK/Ref	5.30%		1.40%	10.00%	1.60%	9.10%	1.20%	1.00%	
Total	100.00%	100.00%	100.00%	100.00%	100.00%	100.00%	100.00%	100.00%	100.00%

**When a doctor says something that I do not understand, I ask questions for clarity.**

	Alachua	Bradford	Duval	Gadsden	Hillsborough	Leon	Miami - Dade	Orange	Putnam
Strongly agree	89.80%	100.00%	82.40%	77.80%	80.10%	80.00%	75.90%	76.60%	88.90%
Somewhat agree	6.80%		14.80%	11.10%	14.10%	16.40%	19.40%	14.10%	11.10%
Somewhat disagree			0.70%	11.10%	2.60%	3.60%	4.40%	7.80%	
Strongly disagree			0.70%		2.60%			1.00%	
DK/Ref	3.40%		1.40%		0.50%		0.30%	0.50%	
Total	100.00%	100.00%	100.00%	100.00%	100.00%	100.00%	100.00%	100.00%	100.00%



**When a doctor recommends a course of treatment that I disagree with, I tell them.**

	Alachua	Bradford	Duval	Gadsden	Hillsborough	Leon	Miami - Dade	Orange	Putnam
Strongly agree	71.20%	100.00%	66.70%	33.30%	65.60%	60.00%	50.30%	58.90%	77.80%
Somewhat agree	16.90%		25.50%	22.20%	23.80%	25.50%	32.40%	31.30%	22.20%
Somewhat disagree	3.40%		5.00%	22.20%	5.30%	7.30%	10.60%	8.90%	
Strongly disagree	1.70%		2.10%		4.20%	3.60%	5.30%	1.00%	
DK/Ref	6.80%		0.70%	22.20%	1.10%	3.60%	1.50%		
Total	100.00%	100.00%	100.00%	100.00%	100.00%	100.00%	100.00%	100.00%	100.00%

**I have to travel to too many different places for my medical care.**

	Alachua	Bradford	Duval	Gadsden	Hillsborough	Leon	Miami - Dade	Orange	Putnam
Strongly agree	15.50%	40.00%	8.60%	12.50%	17.50%	12.70%	16.50%	13.50%	20.00%
Somewhat agree	10.30%		13.60%	50.00%	15.30%	10.90%	27.60%	19.30%	20.00%
Somewhat disagree	22.40%		28.60%	12.50%	19.00%	32.70%	21.50%	23.40%	30.00%
Strongly disagree	48.30%	60.00%	47.90%	25.00%	47.60%	40.00%	33.20%	41.10%	30.00%
DK/Ref	3.40%		1.40%		0.50%	3.60%	1.20%	2.60%	
Total	100.00%	100.00%	100.00%	100.00%	100.00%	100.00%	100.00%	100.00%	100.00%

## Meet the Collaborative



**Kimberly Allen, PhD**  
Chief Executive Officer

**ReGina Newkirk Rucci**  
Director of Equity  
[904ward.org](http://904ward.org)



**Alison Yager, JD**  
Executive Director  
[floridahealthjustice.org](http://floridahealthjustice.org)



**Laudi Campo**  
Florida State Director  
**Adrianna Padilla**  
Health Programs Manager  
[hispanicfederation.org](http://hispanicfederation.org)

Center for Thriving  
Communities



**Atiya Abdelmalik, PhD, MSN, RN**  
Director, Center for Thriving Communities

**Lori Bilello, PhD**  
Co-Director, Center for Health Equity and Engagement Research

**Ross Jones, MD**  
Medical Director, Community Health

**Ann-Marie A. Knight, MHA, FACHE**  
Vice President, Community Engagement and Chief Diversity Officer

**Rebeca Grasley**  
Grant Administrator, Center for Thriving Communities



[UFHealthJax.org/thriving](http://UFHealthJax.org/thriving)

Stay connected to learn more about the Center and how you can support creating opportunities and resources that will help all Floridians be healthy, prosper, and thrive.

Call 904.244.0353 or email [Thriving@jax.ufl.edu](mailto:Thriving@jax.ufl.edu) for more information.

